

TRI-STATE TRACKING

ECONOMIC DATA FOR PENNSYLVANIA, NEW JERSEY, AND DELAWARE



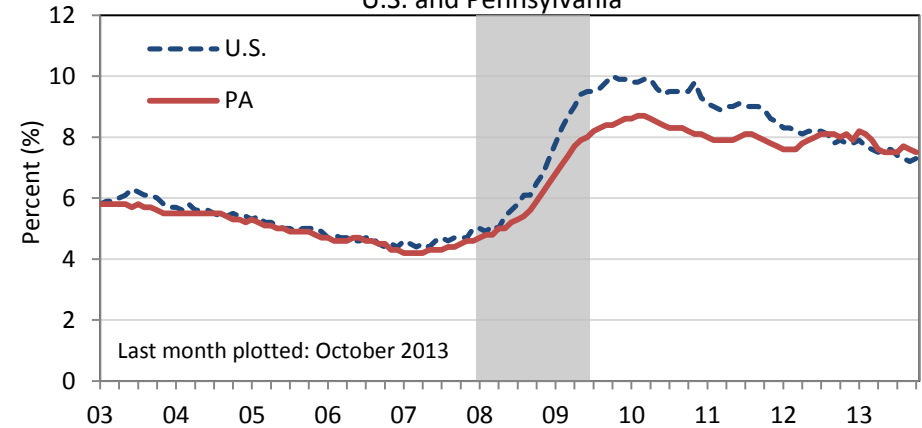
FEDERAL RESERVE BANK OF PHILADELPHIA

Pennsylvania Labor Conditions*

PAYROLL EMPLOYMENT (SA) October 2013	Level (000s)	Y/Y Change (000s)	Y/Y Change (%)
Pennsylvania - Total	5,763.9	29.4	0.5
Natural Resources & Mining	35.2	-0.4	-1.1
Construction	228.6	1.9	0.8
Manufacturing	566.7	1.0	0.2
Trade, Transportation & Utilities	1,099.1	-4.3	-0.4
Information	88.0	-1.3	-1.5
Finance, Insurance & Real Estate	313.0	1.8	0.6
Professional & Business Services	748.6	15.1	2.1
Educational & Health Services	1,183.7	10.8	0.9
Leisure & Hospitality	533.4	12.5	2.4
Other Services	258.1	1.3	0.5
Government	709.5	-9.0	-1.3
RESIDENT EMPLOYMENT (SA)			
Employed	5,986.5	-6.2	-0.1
Unemployed	484.8	-39.7	-7.6
Civilian Labor Force	6,471.4	-46.0	-0.7
Unemployment Rate (%)	7.5	-0.5	
Labor Force Participation Rate (%)	63.3	-0.8	

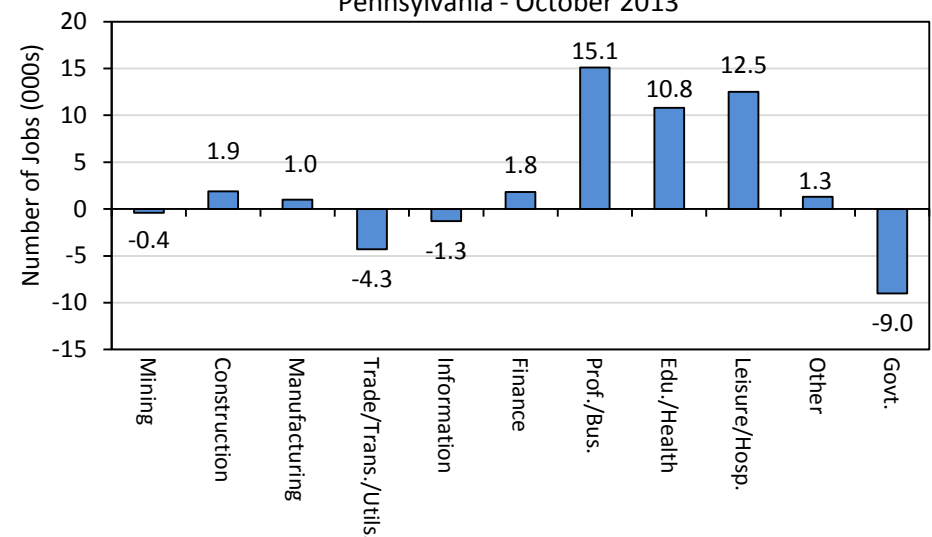
Unemployment Rates (SA)

U.S. and Pennsylvania



Year-over-Year Payroll Employment Growth

Pennsylvania - October 2013



* Monthly data. Source: [Bureau of Labor Statistics](#) via [Haver Analytics](#). Data are seasonally adjusted (SA).

Note: Gray-shaded area in charts is period of business recession as defined by the [National Bureau of Economic Research](#) (NBER).

TRI-STATE TRACKING

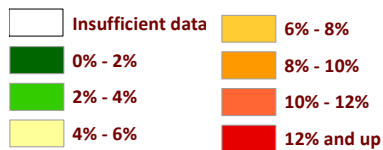
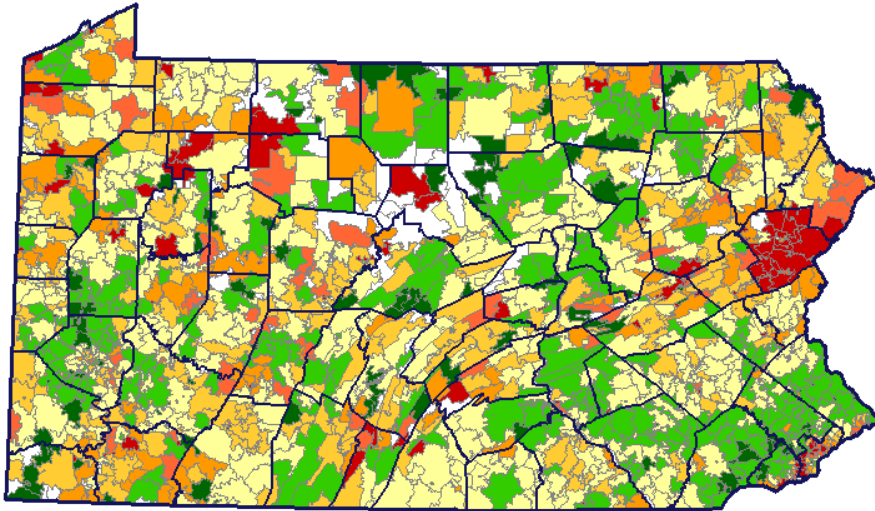
ECONOMIC DATA FOR PENNSYLVANIA, NEW JERSEY, AND DELAWARE



FEDERAL RESERVE BANK OF PHILADELPHIA

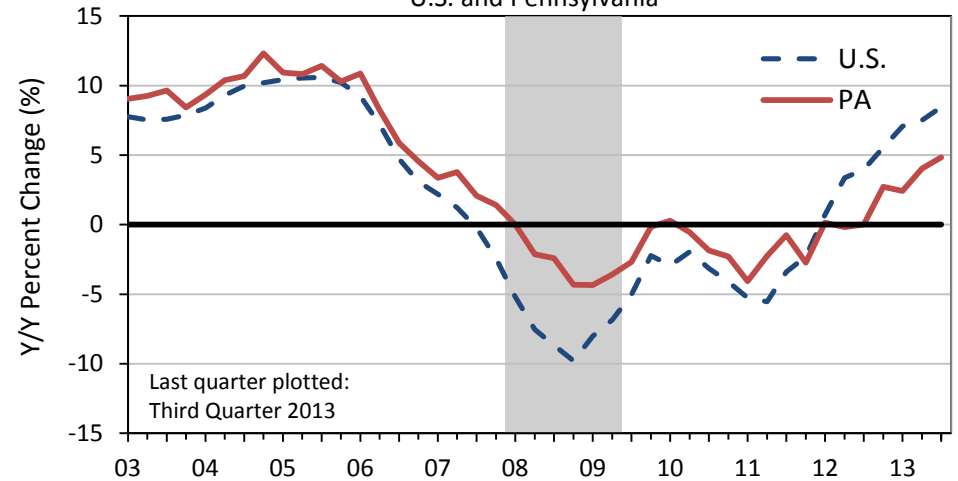
Pennsylvania Housing Market Conditions

PA Seriously Delinquent Mortgages * (90+ Days Past Due or in Foreclosure) October 2013

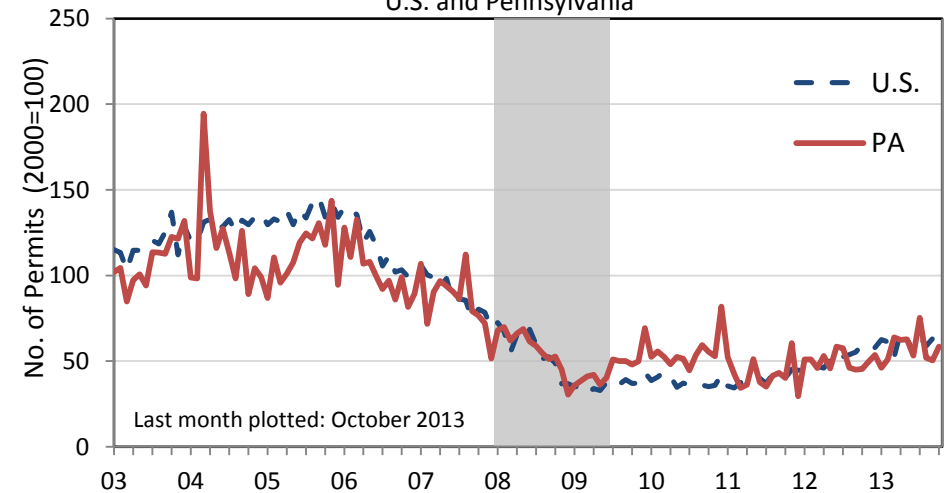


* Monthly data. Source: [LPS Applied Analytics](#)
 ** Quarterly data. Source: [FHFA Home Price Index](#) via [Haver Analytics](#)
 *** Monthly data. Source: [U.S. Census Bureau](#) via [Haver Analytics](#). Data are seasonally adjusted (SA) by the [FRBP Research Department](#).

FHFA Home Price Index Yearly Growth Rate ** U.S. and Pennsylvania



New Building Permits (SA)*** U.S. and Pennsylvania



TRI-STATE TRACKING

ECONOMIC DATA FOR PENNSYLVANIA, NEW JERSEY, AND DELAWARE

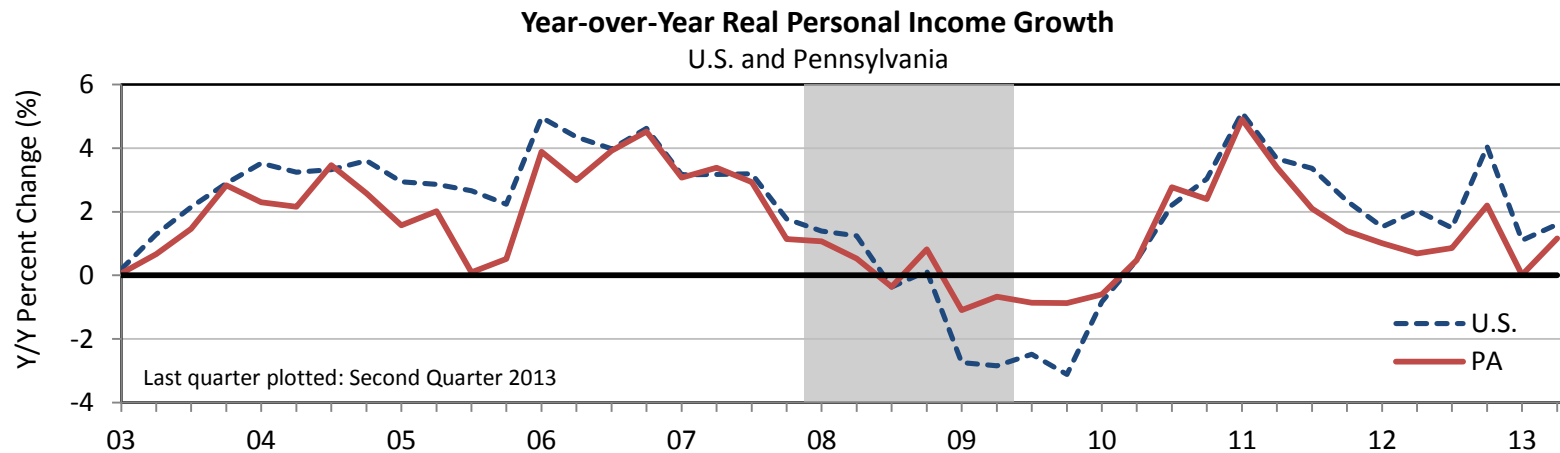


FEDERAL RESERVE BANK OF PHILADELPHIA

Pennsylvania Personal Income*

NOMINAL PERSONAL INCOME (SAAR)† Second Quarter 2013	Level (\$Millions)	Share of Total (%)	Q/Q Change (%)	Y/Y Change (%)
Total Personal Income	584,082	100.00	0.94	2.24
Net Earnings, by Place of Residence	371,986	63.69	0.63	1.12
Earnings, by Place of Work	412,286	70.59	0.61	2.48
Total Wages & Salaries	285,439	48.87	0.69	2.24
Other Labor Income	74,798	12.81	0.40	0.76
Proprietors' Income	52,050	8.91	0.44	6.50
Less: Personal Contributions for Social Insurance	46,570	7.97	0.49	15.06
Plus: Adjustment for Residence	6,270	1.07	1.34	3.89
Plus: Dividends, Interest & Rent	98,189	16.81	3.09	4.78
Plus: Transfer Payments	113,908	19.50	0.15	3.84

†(SAAR): Seasonally Adjusted Annualized Rate



* Quarterly data. Source: [U.S. Bureau of Economic Analysis](#) via [Haver Analytics](#)

TRI-STATE TRACKING

ECONOMIC DATA FOR PENNSYLVANIA, NEW JERSEY, AND DELAWARE



FEDERAL RESERVE BANK OF PHILADELPHIA

Federal Reserve Bank of Philadelphia Research Department

<http://www.philadelphiafed.org/research-and-data/regional-economy/>

Contacts:

Paul R. Flora

**Research & Policy Support Manager/
Senior Economic Analyst**

Phone: (215) 574-6649
paul.flora@phil.frb.org

Contact for:

- Regional Economy
- Beige Book

Tosmai Puenpatom

Senior Economic Analyst

Phone: (215) 574-3852
tosmai.puenpatom@phil.frb.org

Contact for:

- Regional Economy
- State Coincident Indexes
- State Leading Indexes

Elif Sen

Economic Analyst

Phone: (215) 574-6424
elif.sen@phil.frb.org

Contact for:

- Regional Economy
- Business Outlook Survey of Nonmanufacturers
- Unemployment Nowcasts

Mike Trebing

Senior Economic Analyst

Phone: (215) 574-6426
mike.trebing@phil.frb.org

Contact for:

- Regional Economy
- Business Outlook Survey of Manufacturers
- South Jersey Business Survey