



WORKING PAPERS

RESEARCH DEPARTMENT

WORKING PAPER NO. 15-30
THE IMPACT OF UNCONVENTIONAL MONETARY POLICY
ON FIRM FINANCING CONSTRAINTS: EVIDENCE FROM
THE MATURITY EXTENSION PROGRAM

Nathan Foley-Fisher
Federal Reserve Board

Rodney Ramcharan
University of Southern California

Edison Yu
Federal Reserve Bank of Philadelphia

August 2015

RESEARCH DEPARTMENT, FEDERAL RESERVE BANK OF PHILADELPHIA

Ten Independence Mall, Philadelphia, PA 19106-1574 • www.philadelphiafed.org/research-and-data/

The Impact of Unconventional Monetary Policy on Firm Financing Constraints: Evidence from the Maturity Extension Program

NATHAN FOLEY-FISHER, RODNEY RAMCHARAN, AND EDISON YU¹

Federal Reserve Board University of Southern California Federal Reserve Bank of Philadelphia

August 2015

Abstract

This paper investigates the impact of unconventional monetary policy on firm financing constraints. It focuses on the Federal Reserve’s maturity extension program (MEP), which was intended to lower longer-term rates and flatten the yield curve by reducing the supply of long-term government debt. Consistent with those models that emphasize bond market segmentation and limits to arbitrage, around the MEP’s announcement, stock prices rose most sharply for those firms that are more dependent on longer-term debt. These firms also issued more long-term debt during the MEP and expanded employment and investment. These responses are most pronounced for those firms with stronger balance sheets. There is also evidence of “reach for yield” behavior among some institutional investors, as the demand for riskier debt also rose during the MEP. Our results suggest that unconventional monetary policy may have helped to relax financing constraints and stimulate economic activity in part by affecting the pricing of risk in the bond market.

Keywords: quantitative easing, unconventional monetary policy, preferred habitat, financial constraints

JEL codes: G3, E5

¹ Nathan.C.Foley-Fisher@frb.gov; rramchar@usc.edu; Edison.Yu@phil.frb.org. We would like to thank Roc Armenter, Mitchell Berlin, Jef Boeckx, Pablo D'Erasmus, Thorsten Drautzburg, Steven Sharpe, Ashley Wang, and participants in seminars hosted by the Federal Reserve Bank of Philadelphia and the Federal Reserve Board of Governors. The views expressed in this paper are those of the authors and do not necessarily reflect the views of the Federal Reserve Bank of Philadelphia, the Federal Reserve Board of Governors, or the Federal Reserve System. This paper is available free of charge at www.philadelphiafed.org/research-and-data/publications/working-papers/.

I. Introduction

In response to the financial crisis and the weak economy, the federal funds rate has been at the zero lower bound since December 2008. To help overcome the zero lower bound constraint and to stimulate economic activity, the Federal Reserve and other central banks have implemented a number of unconventional policies, including a series of large-scale asset purchases or quantitative easings (QEs). These policies are in part intended to work around the zero lower bound constraint by directly buying assets, such as U.S. Treasury bonds and mortgage-backed securities, to offset disruptions in private sector intermediation in the aftermath of the financial crisis and stimulate the economy (Cahill et al. (2013), Gertler and Karadi (2011), Krishnamurthy and Vissing-Jorgensen (2011), and Shleifer and Vishny (2011)).²

This paper develops a number of empirical tests to understand better the impact of unconventional monetary policy. We focus mainly on the Federal Reserve's attempt to flatten the yield curve through the maturity extension program (MEP), which was announced on Sept. 21, 2011. The MEP was explicitly intended to reduce the supply of long-term Treasury securities and put downward pressure on longer-term interest rates, especially on those assets considered to be close substitutes for long-term Treasury securities. Lower borrowing costs and increased credit availability were then expected to relieve possibly binding financing constraints on firms and households. To that end, the MEP committed the Federal Reserve to sell about \$400 billion in shorter-term Treasury securities and use the proceeds to buy longer-term Treasury securities. The program was extended in June 2012 through December 2012 for an additional \$267 billion. In this paper, we examine how stock prices, debt issuance, and firms' investment and hiring activities reacted to the MEP.

² See Chowdrow-Reich (2013) for evidence on how the crisis might have affected financing constraints at bank-dependent firms. Di Maggio and Kacperczyk (2014) study the impact of low interest rates on reach for yield behavior in the mutual fund industry. Benmelech, Meisenzahl, and Ramcharan (2014) and Ramcharan, Verani, and Van den Heuvel (forthcoming) study the impact of financial sector distress during the crisis on households. DiMaggio, Kermani, and Ramcharan (2014) and Keys et. al (2014) study how monetary policy after the crisis might have affected household-level financing constraints.

Our empirical tests of the MEP's impact are motivated by those theories that emphasize partial segmentation in bond markets, limits to arbitrage, and the role of nonfinancial corporations in responding to shocks in the supply of government debt (Greenwood, Hanson, and Stein (2010), Vayanos and Vila (2009)). Partial segmentation in bond markets can arise when some natural buyers of bonds, such as insurance firms and pension funds, have a preference for investing at specific maturities; life insurers, for example, mainly invest in longer-term bonds to match the duration of their liabilities.³ These models also observe that in response to an unexpected decline in the supply of longer-term government debt, arbitrageurs with limited capital relative to the size of the shock or high levels of risk aversion may only imperfectly enforce the expectations hypothesis, resulting in bond yields that differ from the expectations hypothesis.

With inelastic demand and limits to arbitrage, the argument in Greenwood, Hanson, and Stein (2010) predicts that nonfinancial corporations, especially those with a preference for using longer-term debt to meet their financing needs or those with the financial flexibility to adjust the maturity of their debt issuances easily, would then be expected to fill in the supply gaps for longer-term debt created by government supply shocks like the MEP.⁴ Moreover, if these firms faced binding financing constraints after the crisis, then filling the supply gaps created by the MEP might also allow them to take better advantage of growth opportunities, leading to increased investment and employment. In contrast, if arbitrageurs operate freely at different maturities along the yield curve, then any policy-induced reduction in longer-term yields might be evanescent, having little impact on corporate debt issuances and real outcomes.

The decline in the supply of longer-term government debt engendered by the MEP was large relative to the size of the Treasury market (Table 1), and we find evidence consistent with the gap-filling behavior hypothesized in Greenwood, Hanson, and Stein (2010). Our first set of tests exploits cross-sectional differences in the stock price response to the MEP's announcement. These tests suggest that market participants likely expected the MEP to lower financing costs and relax financing constraints primarily for those firms that traditionally rely on longer-maturity debt. That is, abnormal stock returns on the day after the MEP's announcement rose sharply for those nonfinancial firms that traditionally relied

³ The average maturity of corporate bond holdings in the life insurance industry about 11 years, roughly unchanged since 2004 (NAIC 2014).

⁴ Apart from the MEP, Badoer and James (forthcoming) provide evidence that gap-filling behavior in response to Treasury supply shocks might be an important determinant of long-term corporate issuances.

on longer-term debt finance. An increase of one standard deviation in the long-term debt ratio of a firm is associated with a 0.21 percentage point higher abnormal return, which is about 50% in annualized terms. Our results are robust to a variety of controls and persist even when using higher-frequency intraday data around the announcement.

The paper next examines the response of firms to the MEP using a difference-in-difference methodology. There is evidence that firms with a greater preference for relying on longer-term debt issued more longer-term debt during the MEP to fill the “gap” created by the Fed’s purchases of longer-term assets. An increase of one standard deviation in the long-term debt ratio is associated with about a 6% faster growth in the stock of long-term debt during the MEP’s implementation. As a falsification test, the coefficient estimate for the growth in short-term debt is not statistically significant, giving us some confidence that the effect of the MEP program operates through longer-term borrowing. And consistent with the gap-filling motive, as well as the evidence in Badoer and James (forthcoming), we find that firms with more financial flexibility might have more easily adjusted their financing plans to take advantage of the MEP.

Beyond inducing gap-filling bond issuances by nonfinancial firms, low nominal interest rates or the expectation that low rates might persist can also create incentives for certain types of creditors to take added risk in an effort to reach for yield, affecting risk premia and the demand for longer-dated high-yielding debt (Morris and Shin (2012), Borio and Zhu (2012), and Hanson and Stein (forthcoming)). That is, a monetary policy shock such as the MEP might be associated with changes in the risk premium over and above any change in the actuarially fair long-term interest rate implied by the expectations theory of the yield curve.

We test this “reach for yield” channel using a discontinuity in the capital regulations that govern the insurance industry (Becker and Ivashina (forthcoming)). Insurers are the main buyers of corporate debt in the United States, holding about 60% of all corporate bonds. Their bond holdings are also subject to risk-adjusted capital requirements. These requirements are based on bond ratings, and they increase exponentially as the credit quality worsens. For bonds rated AAA through A-, the capital requirement is identical, but this requirement rises sharply for bonds below the A- threshold. Among AAA through A- bonds, we show that during the period of the MEP’s implementation, risk premia fell disproportionately for the higher-yielding A- bonds, reflecting in part an increase demand for higher-yielding debt that also economize on regulatory capital requirements.

Finally, we investigate whether the MEP had any real effects on firm activities. The difference-in-difference approach suggests that firms more dependent on longer-term debt may have been able to take

advantage of the more benign financing conditions to increase investment and employment during the MEP relative to other periods. During the MEP's implementation, an increase of one standard deviation in long-term debt dependence is associated with a 1.7 percentage point increase in employment growth during the MEP. The effects are similar for the growth in plant and equipment expenditures. And again consistent with the prediction in Greenwood, Hanson, and Stein (2010), these magnitudes are much larger for firms with stronger balance sheets and more financial flexibility.

Our analysis contributes to the literature in three ways. First, we provide new evidence that nonfinancial corporations, especially those with strong balance sheets, might systematically provide liquidity in response to shocks in the supply of government debt. Second, some of our results inform the broader literature on the impact of external financing constraints on stock returns—see, for example, Whited and Wu (2006). Third, this paper adds to the debate on the effects of unconventional policies such as the MEP. Some have argued, for example, that these policies might have little real impact, as economic growth in a post-crisis economy might be shaped more by the pace of reallocation across geography and industries (King (2013)). Unconventional policies are then more likely instead to fuel asset price bubbles, excessive risk-taking, and future instability (Rajan (2013), Stein (2014)). Several recent papers already provide important evidence documenting the effects of these policies, primarily around their announcement dates, on a range of asset prices.⁵ But we are able to probe further and build upon economic theory to identify a key mechanism through which the MEP might relax financing constraints and affect economic decisions for a particular set of firms; we also show that these policies might indeed be associated with additional risk-taking.

The remainder of the paper is structured as follows: Section II describes the maturity extension program and the basic empirical tests. Section III provides a summary of data used in the paper. Section IV presents empirical results using firm- and bond-level data. Section V concludes.

II. The Maturity Extension Program and the Basic Hypotheses

The Federal Reserve announced the maturity extension program (MEP) at 2:23 p.m. EST on Sept. 21, 2011, in its Federal Open Market Committee (FOMC) statement. The Federal Reserve announced that it would sell or redeem a total of \$400 billion of shorter-term Treasury securities and use the proceeds to buy longer-term Treasury securities, thereby extending the average maturity of the securities in the

⁵ See, for example, Cahil et al. (2013), Gagnon et al. (2011), Hamilton and Wu (2012), Swanson and Williams (forthcoming), and Wright (2012).

Federal Reserve's portfolio. With the short-term interest rate near the zero lower bound, the program's intention was to lower long-term interest rates, and ultimately the cost of longer-term credit for households and firms.⁶ The September 2011 announcement indicated a program end date of June 2012. But in June 2012, the MEP was renewed; the Fed announced plans to swap another \$200 billion in short-term Treasuries for longer-maturity debt. The MEP was officially discontinued at the end of 2012.

The MEP was large relative to the size of the Treasury market. Table 1 shows the maturity structure of the Federal Reserve Bank of New York purchases of Treasuries under the MEP. The bottom panel of the table also shows the stock of outstanding Treasuries at various maturities at the end of 2011. For bonds of duration roughly eight years or longer, projected MEP purchases equal about 18 percent of the outstanding stock Treasuries in 2011. To help visualize the MEP's potential impact on bond prices, panel (A) of Figure 1 plots the daily yields of 30-year and one-year Treasury bonds around the announcement of MEP. The solid line is the yield on the 30-year Treasury and the dashed line is the one-year yield. The 30-year yield started to drop when the MEP was announced on Sept. 21, 2011, but the more significant drop occurred on Sept. 22, 2011. Consistent with the economic magnitudes in Table 1, the drop of 25 basis points on Sept. 22 alone was a two standard deviation change, and the 30-year yield dropped by 42 basis points over the two-day period.

Intraday movements in yields show the MEP's impact more clearly. Panel (B) plots the cumulative yield change in the 30-year Treasury over Sept. 21 and 22, observed at 30-minute intervals. Yields began dropping right after the announcement at 2:30 p.m. on Sept. 21. But consistent with the fact that market participants may have taken time to process the announcement's implications, as well as the fact that the Federal Reserve Bank of New York's trading desk only began program implementation at 9:30 a.m. on Sept. 22, yields continued falling until the afternoon of Sept. 22. Panel (C) shows that the yield curve of Treasury bonds also tilted downward, consistent with the intention of the MEP. The solid line is the yield curve of Treasury bonds on Sept. 20, 2011. The dashed and dotted lines are the yield curves for Sept. 21 and Sept. 22, 2011, respectively.

Models that emphasize bond market segmentation and limited arbitrage suggest that the MEP might affect the term spread and the pattern of corporate debt issuances (Greenwood, Hanson, and Stein (2010), Vayanos and Vila (2009)). If arbitrageurs are risk averse, and some natural buyers of corporate

⁶ See the following link for details about the MEP (www.federalreserve.gov/monetarypolicy/maturityextensionprogram-faqs.htm).

debt have relatively inelastic demand for longer-dated maturities, perhaps because they wish to match the maturities of their assets and liabilities, then targeted policies such as the MEP can flatten the yield curve. A key implication of these theories then is that those firms with a “preferred habitat” or a preference for longer-term liabilities, or those able to adjust easily the maturity structure of their borrowings, are likely to benefit the most from the MEP’s attempt to reduce the relative cost of longer-term external finance.

But unconventional policies such as the MEP can also affect the demand for debt and the risk premia that borrowers might face. The expectation that low rates might persist can induce certain types of creditors to take added risk in an effort to reach for yield, reducing risk premia (Guerrieri and Kondor (2012), Hanson and Stein (forthcoming), and Stein (2013)). Investors, for example, with a focus on current income and a need to hold longer-term assets to match the duration of their liabilities, such as life insurance firms, could rebalance their portfolios in favor of both more duration and credit risk when longer-term interest rates are expected to remain low for an extended period (Stein (2013)).⁷ In this case, bond market risk premia are likely to decline especially for those firms that issue longer-term debt.

Motivated by these ideas of limited arbitrage and segmentation at various points in the yield curve, we construct a number of tests to measure the MEP’s impact. These tests build on the idea that in a cross-section of firms, the policy’s impact should be the largest among those firms with a stronger preference for issuing longer-term maturities. When applied to an event study framework around the MEP’s announcement, if market participants absorbed the forward guidance associated with the MEP and believed in segmentation and limits to arbitrage, then stock prices of firms with a higher dependence on long-term debt should react more positively to the MEP’s announcement. After all, because the MEP would be expected to relax financing constraints disproportionately for these types of firms in the aftermath of the financial crisis, they would now be better able to take advantage of growth opportunities.

The second battery of tests focuses on external finance. If the MEP disproportionately reduced the cost of external finance for these firms, we should see an increase in their debt issuances at the extensive margin during the program’s implementation relative to other types of firms. We use a difference-in-difference framework to test these predictions. We also construct tests to gauge the impact of the MEP on the search for yield behavior among the natural buyers of long dated debt, and study its impact on bond market risk premia. A final set of tests is motivated by the idea that if the MEP did relax financing constraints disproportionately for those firms better able to fill the gap in longer-term debt, then

⁷ Morris and Shin (2012) develop a variation of this idea in the case of asset managers, noting that herding behavior can lead to a collapse in the risk premium after a central bank signals low future rates.

these firms might more readily expand employment and investment during the program relative to other types of firms.

The MEP provides an especially useful context in which to investigate the effects of unconventional monetary policy on real economic outcomes. The relative calm around the MEP's announcement makes it somewhat easier to avoid conflating the effects of the MEP with wider developments in financial markets. Previous attempts at quantitative easing, such as QE1, were announced and implemented in 2008 during the financial crisis—a period when financial markets were significantly dislocated and the economy was rapidly slowing. This makes it an especially difficult period for statistical inference. Panic selling and fire sales in asset markets, as well as general uncertainty in the wider economy, all likely occurred around the same time as these unconventional monetary policy announcements.

Compared with the other quantitative easing programs, the MEP's main focus was on flattening the yield curve. Even though the goal of other QEs was also to stimulate the economy, the MEP had the largest proportion of its purchases of long-maturity securities. This precise focus on the yield curve affords us a “natural experiment” to study the differential impact of the program on firms with different debt maturity structures, making it somewhat easier to interpret the evidence relative to other monetary policy measures during the crisis. Indeed, because movements in the term spread generally reflect broader factors, such as expected business cycle movements or consumption smoothing motives, which might also shape firm behavior, distinguishing the direct impact of the term spread on firm behavior and asset prices from these broader factors can be even more difficult outside of the MEP (Estrella and Hardouvelis (1991), Wheelock and Wohar (2009)).

To be sure, there are also challenges in interpreting the results using the MEP in our analysis. The Federal Reserve's MEP announcement could have been motivated by an anticipation of future weakness in those sectors more dependent on longer-term credit. But this anticipatory bias is likely to lead to underestimates of the MEP's impact on asset prices and outcomes for these types of firms. In sum, our efforts to identify better the MEP's impact are aided by the policy's precise focus on the term spread, its well-defined implementation period, and the relative calm surrounding its announcement.

However, considerable care is still required when interpreting the evidence. Economic theory observes that the asset and liability side of a firm's balance sheet is jointly determined, and the asset side of a firm's balance sheet could independently shape how a firm might respond to the MEP. For instance, because firms might match the maturity of their liabilities with the maturity of their assets, those firms

that issue longer-term debt might also operate longer-lived assets (Myers (1977)). In this case, changes in the term structure brought about by the MEP could have an independent effect on future cash flow and firm value that is separate from the hypothesized external finance channel.

Also, because of contracting and information problems, a firm's maturity structure, as well as its choice between arm's-length and bank financing, can be closely related to the firm's credit rating, the quality of projects chosen by its management, and the information that management might have about these projects compared to outsiders (Diamond (1991), Flannery (1986)).⁸ But the credit rating of a firm or even the market's perception of the quality of a firm's projects could also be alternative channels through which the MEP might affect firm value. Concretely, a firm with projects that generate variable cash flow might both predominantly fund itself with longer-term debt to reduce the risk of inefficient liquidation. It might also expect an increase in demand and higher cash flow on account of a more accommodative monetary policy stance. Thus, any increase in firm value that coincides with the MEP's announcement might stem from the expected increase in demand rather than the hypothesized relaxation in financing constraints.

This endogeneity concern guides our empirical research design. In many of our specifications, we use a large number of firm- and industry- level observables to control for various aspects of a firm's balance sheet; we also use high-frequency data to connect more directly our results to the MEP and a firm's dependence on longer-term debt; we document that those firms more dependent on longer-term debt were also more likely to issue debt during the MEP; and we exploit discontinuities in capital regulation among some of the natural buyers of this type of corporate debt to measure the impact of the MEP on risk premia; we also provide evidence that those firms more affected by the MEP on account of their capital structure were also more likely to expand employment and investment during the program.

However, it is impossible to fully address this endogeneity concern using firm-level observational data. But by considering a wide range of alternative specifications and developing tests to identify the underlying mechanisms through which the MEP might affect firm outcomes, unobserved firm heterogeneity is a less attractive interpretation of the evidence, especially when taken together. Another concern stems from the fact that most public databases only coarsely measure the maturity structure of

⁸ This literature is large, and often points to a nonmonotonic relationship between the choice of maturity structure and these firm level observables. See also Hart and Moore (1994), Berglof and von Thadden (1994), the evidence in Barclay and Smith (1995), and Guedes and Opler (1996), as well as the survey in Rajan (2013) and more recent work by Crouzet (2014).

debt. To help address this measurement problem, we report results based on finer proxies for long-term debt dependence (Rauh and Sufi (2010)). In the next section, we describe the data in greater detail.

III. Data

We rely on the cross-firm variation in long-term debt dependence to construct tests of the MEP's impact. To measure this cross-firm variation, most of our baseline tests follow Greenwood, Hanson, and Stein (2010), and define long-term debt as debt with a maturity at issuance longer than one year. Since these tests depend on the variation across firms in their preference for longer-term maturities relative to shorter-term debt—see also Badoer and James (forthcoming)—the baseline measure of long-term debt dependence scales long-term debt by total debt. Throughout, we also include long-term debt as a share of assets to control for the relative importance of long-term debt in the firm's overall financing mix. Also, since the MEP was primarily aimed at maturities greater than one year (Table 1), to match better theory and measurement, we conduct robustness checks using long-term debt dependence with the numerator defined as debt with remaining maturity in excess of three years.⁹

Economic theory observes that the debt maturity structure of a firm might be driven by the nature of its assets and the industry in which it operates. We thus include a large number of firm-level controls from Compustat to limit the potential for biased estimates; throughout, financial firms (SIC 6000-6999) are excluded from the sample. These controls include market capitalization, the product of the total number of outstanding common shares and the closing stock price at fiscal year end, and total assets; the book-to-market ratio is included to differentiate between growth and value firms and is defined as the ratio of book value of equity over market capitalization. We include two measures of firm profitability: 1) net income growth is the log growth rate of a firm's net income; 2) the return on assets is net income divided by total assets; we also include operating income before depreciation and normalized by lagged total assets.

The maturity structure of debt might also be closely related to investment opportunities, and we also include two proxies to control for firms' investment opportunity: average Q, and following Gorodnichenko and Weber (2013), a firm's capital expenditures divided by its net sales. A firm's average Q is the sum of market capitalization and total assets minus book equity, normalized by lagged total assets. We also have a measure of short-term financing need: The difference between accounts receivable

⁹ Unfortunately, debt reporting becomes increasingly unreliable in Compustat as maturities increase, and imputations based on longer maturities are less useful. Please see the data appendix for a discussion of these issues.

and payable, normalized by lagged total sales. A measure of capital intensity is also added as a control variable in the regression.

Again, to limit any spurious associations induced by the crisis, we take the historical average of all the control variables through 2007. Some firm-level variables can vary significantly over time—see, for example, the discussion of capital structures in DeAngelo and Roll (2015)—and for robustness, we also try taking the average of the control variables through to Sept. 21, 2011, or just use the last available observation before 2007. All variables are winsorized at the 1% level to eliminate outliers. The data appendix describes the variables in greater detail.

Table 2A reports summary statistics for two measures of long-term debt dependence and the key control variables, while to make more transparent the challenges to casual inference, Table 2B shows the simple and conditional correlations between the control variables and the baseline (one year cutoff) long-term debt dependence measure. Our endogeneity concern centers in part on the fact that the asset and liability side of a firm’s balance sheet is jointly determined, and there is some evidence that bigger, more capital intensive and profitable firms tend to depend more on longer-term debt.

IV. Main Results

IV.A. The MEP, Long-Term Debt Dependence, and Stock Returns

We first examine whether the MEP’s attempt to relax financing constraints affected stock returns. That is, if market participants expected the MEP to relax financing constraints primarily for those firms that traditionally rely on longer maturity debt, allowing these firms to capitalize better on growth opportunities, then abnormal stock returns obtained around the MEP announcement date should be positively correlated with a firm’s long-term debt dependence. But if market participants perceived that investors would quickly arbitrage away the MEP’s attempt to reduce longer-term yields relative to shorter-term debt, leaving little impact on firm financing constraints, then there should be no statistically significant relationship between abnormal returns and a firm’s debt maturity profile. These tests also rely on the fact that the MEP was not fully unanticipated. If the MEP details and announcement were fully anticipated, we should also see no impact of the MEP announcement on stock returns.

Broader macroeconomic trends can also mask any potential impact from the MEP’s announcement. Long-term yields began falling in the summer of 2011, driven in part by developments in Europe, and well ahead of the MEP’s announcement. If market participants believed that these broader macro trends would likely account for most of the movements in yields and firms’ financing costs, then

the MEP's announcement would again be expected to have little impact on the abnormal returns of those firms more reliant on longer-term debt.

Table 3 examines the relationship between abnormal returns and long-term debt dependence. Column 1 presents the most parsimonious specification: simple OLS regression of abnormal returns of firms on Sept. 22, 2011 on firms' long-term debt dependence. Abnormal stock returns are obtained from a standard one factor model (MacKinlay (1997)), and long-term debt dependence is defined as the ratio of debt with a maturity greater than one year to total debt; for each firm, this ratio is averaged through the history of the firm up through Dec. 31, 2006. Throughout, standard errors are clustered at the three-digit SIC level.

Consistent with the preferred habitat hypothesis, and some of the evidence in the literature on financing constraints and stock returns—see for example Whited and Wu (2006)—the coefficient estimate is positive and statistically significant. A one standard deviation increase in the long-term debt ratio of a firm is associated with 0.21 percentage point higher abnormal return, which is about 50% in annualized term. To distinguish these results from purely sectoral effects, where some sectors are more affected by the announcement of the MEP than others, we include sector (SIC three-digit) fixed effects in the regression in column 2. The coefficient estimate is even bigger after controlling for sector fixed effects.

Since the capital structure of a firm is closely related to the nature of its assets and the industry in which the firm operates, it is plausible that these results could be driven by unobserved balance sheet factors. For example, the stock price reaction to changes in the term spread might vary depending on the size of the firm or its relative “growth potential.” To control for the size and growth potential of a firm, we compute the historical average of market capitalization and book-to-market ratio of firms. As before, the average is taken through the whole history of each firm up until Dec. 31, 2006. Column 3 of Table 3 shows that the results are very similar, suggesting that the MEP might have had an impact on the value of the firm through the cost of long-term debt rather than purely through size and/or the growth potential of the firm.

We now include a veritable kitchen sink of firm-level observables to gauge the robustness of these results. Column 4 controls for firm leverage; the impact of leverage on abnormal returns is positive and the coefficient on long-term debt dependence remains significant. In addition to leverage, we add the total assets of a firm to measure better firm size. Column 5 also includes various measures of profitability, the firm's “investment opportunities,” dependence on external financing; short term financing, and capital intensity. The coefficient on long-term debt dependence remains unchanged throughout.

In reacting to the MEP's announcement, market participants may have been influenced by more recent firm-level information than those observed pre-2007. As an additional robustness exercise, we use the last available observation of the control variables before Sept. 21, 2011, in column 6, instead of the historical average. And in column 7, the historical averages for all variables are computed using observations before the announcement of the MEP; we thus include the financial crisis. Across these various specifications, the impact of long-term debt dependence on abnormal returns the day after the MEP announcement remains positive and significant.

We have seen that the relationship between long-term debt dependence and abnormal stock returns is robust to most firm-level controls, but one competing explanation is that these firms are just more sensitive to monetary shocks more generally. As shown by Kuttner (2001), Bernanke and Kuttner (2005), and Gürkaynak et al. (2005), among others, stock prices react to unexpected monetary shocks. And to some extent, the MEP is an unexpected monetary shock, as measured by the changes in the prices of the federal fund futures. If our measure of long-term debt dependence captures the sensitivity of firms' response to monetary shock, these results could merely be a consequence of the differential effects of an unexpected monetary shock to short-term interest rates on firm value.

This interpretation is belied by the fact that the magnitude of the unexpected shock on the federal funds rate is small (about 0.8 basis points), and this shock occurred on Sept. 21, 2011, rather than on Sept. 22, 2011—the day the yield curve flattened the most. But to address more directly this concern, we include a control variable called “monetary shock sensitivity” in the regression. Following Gorodnichenko and Weber (2013), this monetary shock sensitivity variable is the slope coefficient estimates from firm-by-firm regressions of stock returns on unexpected monetary shocks over the period between 1980 and 2010. These slope coefficients capture the sensitivity of a particular firm's stock return to unexpected monetary shocks. The results of the regression with the inclusion of this extra control variable are reported in column 8. The coefficient for the long-term debt dependence remains large and statistically significant.

Finally, our baseline measure of long-term debt—debt with a maturity greater than one year—has the widest coverage in public databases and is likely to have been the focus of investor attention as markets tried to parse the impact of the MEP on firms. Nevertheless, the MEP primarily affected yields at maturities longer than a year, and in column 9, we define long-term debt dependence as the ratio of debt with a maturity in excess of three years to total debt. The coefficient is significant and suggests that an increase of one standard deviation in this variable is associated with a 0.17 percentage point increase in

abnormal returns—an impact smaller than that obtained using the baseline one year definition of long-term debt dependence, but is still very significant.

Alternative Dates

While it seems unlikely that the results in Table 3 are driven by latent firm-level factors, they might be driven by events other than the MEP. In this subsection, we consider a number of additional tests to check whether the relationship between long-term dependence and abnormal returns is unique to Sept. 22, 2011 or also appear around dates unrelated to the MEP. Using the baseline specification in column 8 of Table 3, we first plot the long-term debt dependence coefficient estimate for a 10-day window around Sept. 22, 2011, event date. The red line in Figure 2 plots the coefficient point estimate on each day in that window and the shaded area indicates the 95% confidence interval. The coefficient is statistically significant only on Sept. 22, 2011, at the 5% level. This gives us some confidence that the MEP affects firms on the day the yield curve flattens the most and that these results are not driven by other events around the same time period.

In addition to the placebo test previously described, we also report the regression results for a 10-day window around some other dates. The first set of these dates corresponds to the period around the MEP's announcement, namely around Sept. 22, but for three different years proximate to our event: 2009, 2010, and 2012. The second set of dates is the two announcement dates for quantitative easings: Nov. 3, 2010 (QE2), and Sept. 13, 2012 (QE3). The reason that we exclude the announcement date of QE1 is that QE1 was announced in 2008 during the financial crisis. Since the computed abnormal returns in our analysis are predicted residuals of a one-factor model using historical data one year in advance, the residuals are not reliably predicted during extreme market turbulence, and we exclude 2008 from the placebo test here.

Table 4 shows the results of these various placebo tests. In Panel A of Table 4, we run the same regression for the 10-day windows around the same time of year in 2009, 2010, and 2012. The exact date is either Sept. 20, 21, or 22, depending on weekends. No coefficient estimates are statistically significant at the 5% level. In Panel B, we include the announcement dates of QE2 and QE3 in addition to the previous results for the MEP. Out of all these dates, only the coefficient estimate for Sept. 22, 2011, is statistically significant at the 1% level. There are two coefficient estimates that are marginally significant at the 5% level. The coefficient estimate is marginally significant on Nov. 2, 2010, one day before the announcement of QE2. The coefficient is also significant on Sept. 6, 2012, five and six days before the

announcement of QE3. The result may not be related to the announcement of QE3, however. On Sept. 6, 2012, the European Central Bank announced its unlimited bond buying program and this might have a similar effect as the MEP. These placebo tests thus suggest that the timing of the long-term debt dependence coefficient likely reflects the Federal Reserve implementation of the MEP.

IntraDay Data

The positive association between abnormal returns on Sept. 22, 2011, and long-term debt dependence appears robust to a large number of firm-level controls, and there is little evidence of any such positive association on days unrelated to the MEP. However, using a finer temporal dimension based on intraday stock returns can help us further exclude alternative explanations and help reveal better how financial markets might process complex news. Figure 1B suggests that bond markets might have taken some time to react to the MEP. Given that the program was announced at 2:23 p.m., Sept. 21, 2011, and the market closed at 4 p.m., if indeed investors needed time to digest the announcement, then the main hypothesis would predict that the relationship between abnormal returns and long-term debt dependence should become increasingly positive during early trading on Sept. 22.

To test this prediction, we use high frequency stock returns from the NYSE TAQ database. We compute 30-minute log returns for each stock between 9:30 a.m. and 4 p.m. for each day; the 9:30 a.m. return is computed using the opening price of the day and the closing price of the previous trading day. We next obtain abnormal returns by using a one factor model-controlling for S&P 500 returns-over the base period 9:30 a.m. Aug. 22, 2011, through 4 p.m. Sept. 16, 2011, for each stock.¹⁰ From this baseline factor model, we compute abnormal returns for every 30-minute interval for the trading days of Sept. 21 and Sept. 22, 2011. Finally, we regress cumulative abnormal returns during those two trading days on the long-term debt dependence variable along with all the control variables from our baseline specification in column 8 of Table 3; industry fixed effects (SIC-3) are included and standard errors are clustered at the SIC-3 level.

Figure 3A plots the coefficient estimates for long-term debt dependence and the corresponding 95% confidence intervals for each 30-minute interval over the two trading days. Consistent with the idea that market participants might have gradually begun to expect the MEP to relax financing constraints primarily for those firms that traditionally rely on longer maturity debt, the coefficient fluctuated around

¹⁰ High-frequency data allow for the calculation of reliable correlations over a far shorter horizon that required by daily data. For example, Huang, Zhou and Zhu (2009) use equally spaced 30-minute returns over a range of time horizons from one week to one quarter.

zero for the trading day of Sept. 21 but then began to rise when trading resumed on Sept. 22. The point estimate kept rising until around 11 a.m. of Sept. 22, before plateauing for the rest of the trading day. This pattern is consistent with the idea that investors might have only gradually digested news of the MEP, adjusting their valuations throughout the morning of Sept. 22.

Narrowing the frequency of analysis down to 30-minute time intervals helps to exclude a number of alternative explanations, but at this level of granularity we need to consider possible confounding effects due to major economic news and policy announcements on that day. To this end, we did a search on Bloomberg news and found three economic releases on Sept. 22. The U.S. jobless claims data were released at 8:30 a.m. The released number was at 423,000 for the week ended on Sept. 17, 2012, which was very similar to those of the previous few weeks with the four-week moving average at 421,000 and the number was also within the range of forecasts by economists between 408,000 and 430,000. The Conference Board released its monthly Leading Economic Index for the U.S. at 10:00 a.m. The index increased 0.3% in August to 116.2, following a 0.6% increase in July and a 0.3% increase in June. The Federal Housing Finance Agency (FHFA) released its monthly House Price Index for July at 10 a.m. The index increased 0.8% for July, compared with 0.7% and 0.3% increases for June and May, respectively.

None of the aforementioned three are major economic releases and the numbers were seen to be well within the range of expectations. The Conference Board index, for example, is computed using economic data that were already released in the previous month, and hence the released number was likely to have been already anticipated. Also, the jobless claims and the Conference Board index are both indicators of aggregate economic activity, which are already absorbed in our event study regressions through the S&P 500 factor. And it is unclear why the impact of these announcements on firm value might vary depending on the maturity structure of their debt.

The FHFA index release was also not a major surprise, with housing market conditions slowly improving. But given the importance of housing-related news after the crisis, we report estimates from the high-frequency event study regressions excluding observations from the construction industry (SIC 1500-1799).¹¹ Figure 3B shows that the results almost are unchanged compared with those in Figure 3A. Finally, instead of using the ratio of debt with a maturity in excess of one year to total debt, as a further robustness check, we replicate the analysis in Figure 3A but use debt with a remaining maturity in excess of three years as the numerator in this alternative measure of long-term debt dependence. The coefficients are quantitatively similar, though somewhat less precisely estimated (Figure 3C).

¹¹ In all regressions, firms in the real estate industry are already excluded as a part of the financial sector.

IV.B. External Finance

In this subsection, we develop additional tests to understand better the mechanisms underlying these results. We have already seen evidence that upon the MEP's announcement, firm value increased disproportionately among those firms more dependent on longer-term debt. But a determined skeptic might nonetheless argue that the change in firm value reflects latent news that also coincided with the MEP's announcement or unobserved firm heterogeneity and does not reflect the causal impact of the policy on financing constraints and valuation. Even if the increase in firm value causally reflects the impact of the MEP's announcement on equity prices, the evidence is still silent on whether the MEP relaxed firm financing constraints in practice for those more dependent on longer-term debt and whether the policy actually led to any change in their employment or investment decisions.

The first set of tests in this subsection centers on the idea that if the MEP affected the cost of longer-term external finance, then firms more reliant on this type of finance would be more likely to issue debt during the MEP's implementation period relative to other periods. That is, to the extent that corporate bonds are close substitutes for longer-term Treasuries, the gap-filling hypothesis would predict that when Fed purchases reduce the supply of long-term Treasuries, firms with a preference for longer-term debt, or with the financial flexibility to adjust easily the maturities of their issuances, will increase the supply of longer-dated corporate bonds.

We also consider tests of the "reach for yield" hypothesis and bond risk premia. Low nominal interest rates, and the expectation that low rates might persist, can also create incentives for certain types of creditors to take added risk in an effort to reach for yield, affecting risk premia and the supply of credit (Adrian and Shin (2010), Borio and Zhu (2012), and Hanson and Stein (forthcoming)). Thus, a monetary policy shock such as the MEP might be associated with changes in the risk premium over and above any change in the actuarially fair long-term interest rate implied by the expectations theory of the yield curve.

Investors, for example, with a focus on current income and a need to hold longer-term assets in order to match the duration of their liabilities, such as life insurance firms, could rebalance their bond portfolios in favor of both more duration and credit risk when longer-term interest rates are expected to remain low for an extended period (Greenwood and Hanson (2013), and Stein (2013)). Using a global games framework, Morris and Shin (2012) develop a variation of this idea in the case of asset managers, noting that after a central bank signals low future rates, herding behavior can lead to a collapse in the risk premium.

To investigate the MEP's potential impact on bond issuances, we first focus on the extensive margin. The basic test uses a difference-in-difference estimation strategy to examine whether the stock of longer-duration debt rose faster during the MEP's implementation at firms with a preference for issuing this kind of debt. The data are observed annually from 2007 to 2013, and the dependent variable in column 1 of Table 5A is the growth in the stock of long-term debt—debt with maturity over one year—observed for the panel of firms. We create a dummy variable to capture the implementation of the MEP program; it equals one if a firm-year observation falls between Jan. 1, 2012 and Dec. 31, 2012, and zero otherwise.¹²

The key variable of interest is the interaction between this dummy variable and a firm's long-term debt dependence: If the MEP disproportionately increased credit usage for firms more reliant on longer-term debt, then we would expect this coefficient to be positive. As always, we use the historical average before 2007 to avoid any potential endogenous firm responses to large scale asset purchases and the crisis. We use a full suite of firm controls in the regressions. These controls include the historical averages of the same variables as in column 5 of Table 3, all interacted with the MEP indicator variable; we also allow these variables to vary linearly over time in the panel to control for time-varying firm characteristics. Firm and year fixed effects are also included in all regressions.

We find evidence consistent with gap-filling behavior. The point estimate in column 1 of Table 5A suggests that a one standard deviation higher long-term debt ratio is associated with about a 7% faster growth in the stock of long-term debt during the MEP's implementation. The unconditional mean of the growth rate in the stock of long-term debt during the sample period is about 5%. As a falsification test, in column 2, the coefficient estimate for the growth in short-term debt is not statistically significant, giving us some confidence that the effect of the MEP operates through longer-term borrowing. All this suggests that those firms that traditionally rely on longer-term financing may have more easily been able to fill the gap in longer-dated securities created by the MEP.

Building on Greenwood, Hanson, and Stein (2010) and the evidence in Baroder and James (forthcoming), another test to help determine the MEP's impact on external finance centers on the idea

¹² The reason that we use the 2012 calendar year for the post event period is twofold. First, the MEP was announced toward the end of 2011 and expired at the end of 2012. It might take some time for the firms to adjust their borrowing and investment, and the reported financials for 2011 may not fully reflect the effects of the MEP. Second, firms report financials on different dates of a year and many firms' fiscal years end in December. Using the 2012 calendar year thus likely includes the most updated financial information in 2012—the full year in which the MEP was in effect.

that firms with more financial flexibility on account of their balance sheet strength might also more easily be able to adjust their financing plans in order to take advantage of the MEP and more general changes in the term structure. For example, among those firms that rely more on longer-term debt, the ones that are also less financially constrained—those for instance that are large and have ready access to the bond market—should evince a greater supply elasticity, making use of their relatively greater financial flexibility in order to increase more rapidly their longer-term borrowings during the MEP relative to firms with less flexibility.

Table 5B implements tests based on this idea. It examines whether the growth in the stock of longer-term debt during the MEP varied depending on the extent to which a firm might face external financing constraints. To be sure, measuring external financing constraints is difficult. A firm's equilibrium use of external finance could reflect the availability of good investment projects—the demand for finance—as well as constraints on the supply of finance. And any single balance sheet variable is likely to provide only limited information on external financing constraints. To wit, a firm with a large stock of liquid assets might have a large debt capacity and easy access to external finance. But just as well, a buildup of liquid assets could reflect the precautionary savings motive because of severe external financing constraints induced by agency problems or asymmetric information. Therefore, rather than rely on a single measure or a summary index, we consider a large number of potential indicators of financial constraints identified in the literature.

These indicators include cash flow to assets, cash balances to assets, Tobin's Q, and market capitalization. Also, we consider subsamples of firms based on sales growth. Intuitively, among the sample of firms more dependent on longer-term debt, those with faster sales growth and possibly good investment opportunities might also react more to any MEP-induced relaxation in financing constraints.¹³ For each indicator, we estimate separately the specification in column 1 for the subsample of firms in the bottom quartile of the indicator—those firms in the bottom quartile of cash balances or market capitalization—and again for the sample of firms above the 25th percentile.

¹³ The literature on firm financing constraints is large, and offers a diverse range of approaches to measuring financing constraints. See for example Faulkender and Petersen (2006); Farre-Mensa and Ljungqvist (2014); Fazzari, Hubbard and Petersen (1988); Hoshi, Kashyap and Scharfstein (1991); Kaplan and Zingales (1997); Hubbard, Kashyap and Whited (1995); Whited and Wu (2006). Building on this literature, we have also considered subsamples based on whether a firm has had a credit downgrade; probability of default, credit rating, a bond rating, dividend payout policy, analyst coverage and whether the firm has a banking relationship. These additional results are generally less precise and available upon request.

The evidence in Table 5B suggests that those firms that rely more on longer-term debt and that are less financially constrained may have been able to increase more rapidly their longer-term borrowings during the MEP. For example, for those firms in the bottom quartile of cash flow to assets, the MEP interaction term is not significant, and the point estimate is also small: A one standard deviation increase in long-term debt dependence is associated with a 4.7 percentage point increase in the growth in the long-term debt during the MEP. But for those firms outside of the bottom quartile, the interaction term is significant and economic effect is much larger: A one standard deviation increase in long-term debt dependence is associated with 9.3 percentage point increase in the growth in the long-term debt during the MEP.

A similar pattern emerges for the other indicators. Again, each of these indicators can be criticized, especially in the context of post-crisis credit market dislocations. High cash balances might for example be a symptom of firm's precautionary hoarding of cash due to financing constraints rather than an indicator of financial flexibility. But when taken together, the pattern of evidence does suggest that less financially constrained firms that traditionally depend on longer-term debt might have issued more debt during the MEP.¹⁴

However, changes in a stock variable can imperfectly measure the response of firms at the extensive margin, and we now use data on corporate bond issuances from the Mergent FISD database to measure better the connection between the MEP and the use of external finance. The database covers most corporate bond issuances, recording information about the issuer, offering date, maturity, and issuance amount. We use this information to study whether firms that are more reliant on longer-term debt are more likely to issue debt during the MEP. We measure the extensive margin by aggregating the issuance data up to the firm-calendar year level, merging the FISD data with the Compustat file by CUSIP and company names. This merge results in a match of 2,517 firm years, and it allows us to test whether the MEP is associated with a change in the probability of a firm issuing a corporate bond.

In column 1 of Table 6A, the dependent variable equals 1 if a firm issued a bond of any maturity in the calendar year and 0 otherwise.¹⁵ As before, the key variable of interest is the interaction between the MEP implementation period indicator variable—equal to 1 for calendar year 2012 and 0 otherwise—

¹⁴ These results are similar and available upon request if we split the sample of firms by the median value of the respective indicator.

¹⁵ Corporate bonds usually have very long maturity. In our sample, over 90% of bonds issued have maturity of 30 years or longer.

and a firm's long-term debt dependence, as measured up through 2007; year fixed effects are the only other controls, and the sample period is 2007—2013. The evidence continues to suggest that the MEP affected credit usage at the extensive margin, especially for those firms more reliant on longer-term debt. In this most parsimonious specification, the point estimate in column 1 suggests that moving from a firm at the 25th to 75th percentile of long-term debt dependence is associated with a 0.05 increase in the probability of a debt issuance in 2012; the unconditional probability of a debt issuance is 0.31 over the sample period.

A firm's past decision to issue debt could potentially bias these estimates, and column 2 includes the one-year lag in the issuance decision as a control variable. The results remain unchanged in this autoregressive specification. Column 3 controls for time invariant firm unobservables using firm fixed effects, while column 4 retains firm fixed effects and interacts the full suite of standard firm-level controls with the MEP indicator variable in order to gauge further the robustness of these results; these controls are linearly absorbed in the firm fixed effects. Finally, using the same set of indicators as before, Table 6B examines whether these results vary depending on financial flexibility. The estimates are somewhat noisier but continue to suggest that more financially flexible firms with a greater dependence on longer-term debt may have more easily filled the MEP-induced gap.

Risk and Credit Spreads

We have seen evidence of gap-filling behavior by nonfinancial firms during the MEP, but some arguments observe that by engendering expectations of persistent low long-term rates, the MEP could provide incentives for certain types of creditors to take added risk in an effort to reach for yield, affecting risk premia and the supply of credit. To develop tests of this hypothesis, we turn to the insurance industry.

Insurers and the capital regulations that govern the industry provide an especially helpful context in which to investigate further this potential supply channel. Insurers are the dominant buyers of corporate bonds among institutional investors, holding about 60% of all corporate bonds. And there is already evidence that the industry as a whole might engage in reach for yield behavior, potentially shaping bond market risk premia (Becker and Ivashina (2014)).

Our empirical test builds on the idea that, as with banks, insurance companies are subject to risk-adjusted capital requirements on their investments. These requirements are coordinated through the National Association of Insurance Commissioners (NAIC) and are based on the bond rating of the investment, increasing sharply as the credit quality worsens. For bonds in NAIC Category 1, those rated

AAA through A-, the insurer has to have \$0.30 of equity capital for each \$100 invested in Category 1 bonds. But for Category 2 bonds, those rated BBB+ to BBB-, the capital requirement triples.

Our empirical tests exploit this discontinuity in the regulatory capital requirement between Category 1 and Category 2 bonds. Among Category 1 bonds, those rated A- potentially afford the highest yield for the same capital requirement. Therefore, if the MEP and the associated forward guidance on efforts to push down longer-term rates induced greater “search for yield” among insurers, then the demand for A- debt should rise, and we should expect to see a steeper drop in the risk premia for those bonds rated A- during the MEP relative to other Category 1 bonds.¹⁶ The aggregate evidence in Figure 4 suggests that the MEP might have shaped insurance portfolio decisions. For the universe of insurers, Figure 4 plots the share of A- rated debt in their Category 1 holdings. After remaining relatively flat the previous decade at around 5%, this share nearly triples between 2008 and 2011, and it increases substantially in the period around the MEP; this share then drops after the expiration of the MEP.

The test results in Table 7 appear consistent with this aggregate evidence. For those firms that issued debt during the sample period, we compute the risk premium associated with each bond at issuance: the spread between the bond’s offering yield and the corresponding Treasury yield of the same duration. Using this risk premium as the dependent variable, in column 1 we restrict the sample to NAIC Category 1 bonds. To test for the impact of reach for yield behavior during the MEP, we then interact an indicator variable for A- bonds with the MEP dummy variable. The coefficient on the interaction term gives the difference-in-difference effect on the bond risk premium of an issue having an A- rating during the MEP period. We also include time and issuer (firm) fixed effects in addition to firm-level time-varying covariates from Table 5A, along with key bond characteristics such as the maturity, rating, and issuance size.

The interaction coefficient is statistically and economically significant. Among Category 1 bonds, those rated A- were associated with a roughly 25% lower risk premium during the MEP period. Column 2 reports the same specification adding interaction terms between the MEP indicator variable and all the firm-level covariates, so that the coefficient on the interaction term reflects the discontinuity in ratings during the MEP holding firm-level fundamentals fixed. The results are unchanged.

¹⁶ NAIC bond credit ratings are constructed from the credit ratings assigned by the three major credit rating agencies and provided by the Fixed Income Securities Database (FISD). Following the NAIC procedure as applied by Becker and Ivashina (forthcoming), we compute the median credit rating when all three ratings are available, and the minimum credit rating when only two ratings are available.

However, rather than identifying reach for yield through a regulatory discontinuity, the MEP and the attendant forward guidance or even developments in Europe around this time might have reduced policy uncertainty, lowering credit spreads more generally, or perhaps especially for high-yielding debt. In column 3, we consider a sample of all Category 1 bonds plus BBB+ bonds—the highest-rated Category 2 bonds—and examine whether spreads on BBB+ bonds fell during the MEP relative to Category 1 bonds. We find no evidence that spreads on these higher-yielding bonds that also absorb more regulatory capital fell during the MEP’s implementation. Even when broadening the sample to all Category 1 and Category 2 bonds, there is no evidence that spreads fell during the MEP for the highest-yielding bonds: BBB- (column 4). In contrast, even among this same sample, spreads fell significantly for A- debt (column 5). All this suggests that insurers, one of the major buyers of corporate debt, might have sought out higher-yielding debt during the MEP, while still trying to economize on regulatory capital requirements.

IV.C. Firm Outcomes

This subsection investigates the other dimensions through which the MEP might have affected firm behavior. In particular, we have seen that the MEP’s impact on the yield curve might have shaped the cost and availability of credit disproportionately for those firms with a preference for longer-maturity borrowing. A key implication of these results then is that any relaxation in financing constraints for these firms might have also allowed them to take advantage of growth opportunities, leading to more investment and employment at firms more dependent on longer-term debt during the MEP (Adrian, Colla and Shin (2013), Becker and Ivashina (forthcoming)). Alternatively, absent good investment opportunities but amid continued economic and policy uncertainty in the aftermath of the crisis, firms could have also responded to the MEP induced decline in borrowing costs by holding more cash or repurchasing shares (Bates, Kahle, and Stulz (2009)).

We investigate these hypotheses using a similar difference-in-difference framework as before. The key variable of interest is the interaction between the MEP and a firm’s long-term debt dependence measure, as measured before 2007. We continue to interact the full suite of other firm-level controls with the MEP indicator variable to measure more accurately the impact of long-term debt dependence on firm outcomes during the MEP; the panel structure also allows firm fixed effects to absorb firm level time invariant heterogeneity, along with year fixed effects; time varying firm characteristics are also included as in the previous sections, and standard errors are clustered at the firm-year level.

Using the sample of public firm-year observations from 2007 to 2013, the dependent variable in column 1 of Table 8A is the growth in spending on plant, property, and equipment. The coefficient on the interaction term between the MEP and long-term debt dependence is positive and significant at the 5%

level. The point estimate suggests that an increase of one standard deviation in long-term debt dependence is associated with a 2.3 percentage point increase in the growth in PPE expenditures during the MEP. The unconditional mean of the growth in PPE expenditures is about 4.7% during the sample period. In column 2, we use the growth in the number of employees as the dependent variable. These are computed from employee data reported in firms' annual reports. Again, we find significant evidence that those firms more dependent on longer-term debt may have expanded employment at a faster pace during the MEP. In this case, an increase of one standard deviation in long-term debt dependence is associated with a 1.7 percentage point increase in employment growth during the MEP. The unconditional mean of the growth in employment is about 1.9% during the sample period.

In column 3 of Table 8A, the dependent variable is the growth in cash holdings. The interaction term between the MEP and long-term debt dependence is not significant, and there is little evidence of the precautionary motive. We also find no evidence that firms' more dependent on longer-term debt engaged in significantly higher levels of dividends and share buybacks during the MEP.¹⁷ As a robustness check, the bottom panel of Table 8B uses the noisier but potentially more relevant measure of long-term debt dependence: the ratio of debt with a maturity greater than three years to total debt (observed before 2007). The results are unchanged.

Among those firms more dependent on long-term debt, we have already seen evidence that firms with greater financial flexibility evinced a greater supply elasticity with respect to the "gap" in longer-dated maturities created by the MEP. Therefore, if the investment and employment results stem from the increased availability of external funds during the MEP, then the coefficient on the interaction term between the MEP and long-term debt dependence should be largest for the sample of firms with greater financial flexibility; these firms after all were more likely to access external funds during the MEP.

Using the growth in employment as the dependent variable, Table 8C examines whether the coefficient on the interaction term between the MEP and long-term debt dependence varies by the degree of firm financial flexibility. From Table 8C, the evidence is stark. Among those firms in the bottom quartile of the various indicators, the interaction term between long-term debt dependence and the MEP is both small and statistically insignificant. Yet, for firms outside the bottom quartile, the point estimates are economically and statistically meaningful. From column 4, for example, an increase of one standard deviation in long-term debt dependence is associated with a 3 percentage point or 0.12 standard deviation increase in employment growth. But among firms in the bottom quartile of cash flows, the point estimate

¹⁷ The details of constructing these variables are provided in the data appendix.

is actually negative and insignificant. A similar pattern emerges when using the growth in plant, property, and equipment expenditures as the dependent variable (Table 8D).

V. Conclusion

Despite the extensive literature focused on the impact of unconventional monetary policy on asset prices, little is known about whether these programs are effective in stimulating real economic activity or the underlying mechanisms through which they might work. The current paper fills this gap by examining the impact of the maturity extension program on firms. Consistent with the Federal Reserve's forward guidance, and those theories that emphasize limits to arbitrage and segmentation in the bond market, we first document that abnormal returns around the MEP's announcement were higher among firms more dependent on longer-term debt. That is, financial markets seemed to expect that the MEP would help disproportionately relax financing constraints for this set of firms.

Consistent with this expectation, we also find that firms traditionally more reliant on longer-term debt had faster growth in long-term borrowing during the MEP's implementation. These firms also appeared to have expanded employment and investment faster during the MEP. Also, among the set of firms more reliant on longer-term debt, these responses to the MEP are much more pronounced for those with greater financial flexibility, as measured by a number of indicators. But we also find some evidence of reach for yield behavior, as credit spreads fell disproportionately for firms issuing longer-term riskier debt during the MEP.

When taken together, the evidence suggests that the MEP might have been effective in relieving financing constraints and stimulating economic activity in the aftermath of the crisis, especially for those firms with strong balance sheets and more dependent on longer-term debt. But the reach for yield evidence also suggests that these policies could affect the pricing of risk in bond markets. We leave it to future research to understand better the longer-term implications of these policies for bond markets. Also, our methodology seems most apt for evaluating the MEP, and we also leave it to future research to understand better the other unconventional monetary policy interventions after the crisis.

Figures and Tables

FIGURE 1A. TREASURY YIELDS AROUND THE MEP

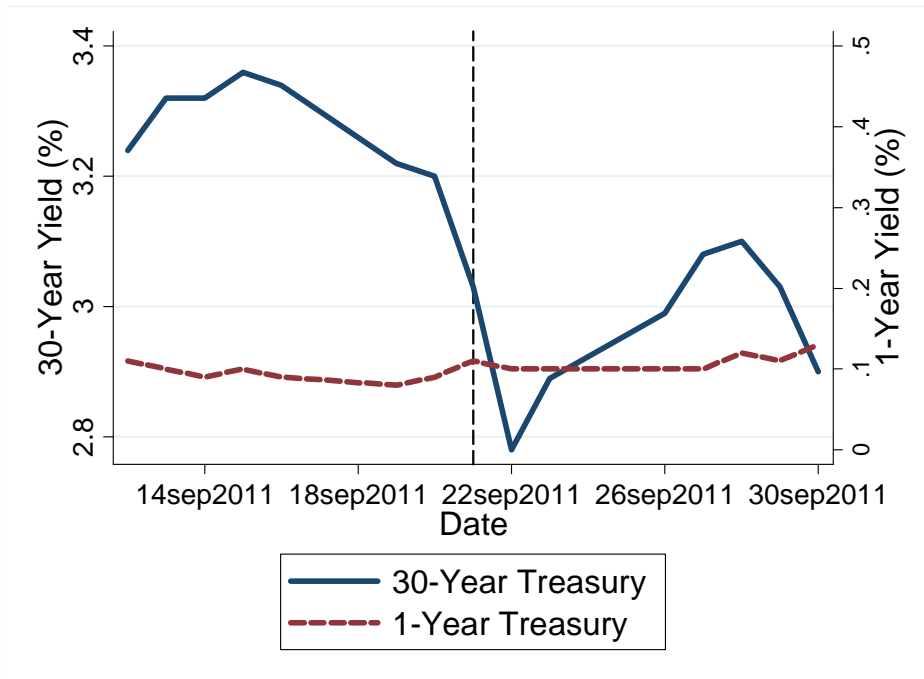


FIGURE 1B. INTRADAY TREASURY YIELDS AROUND THE MEP

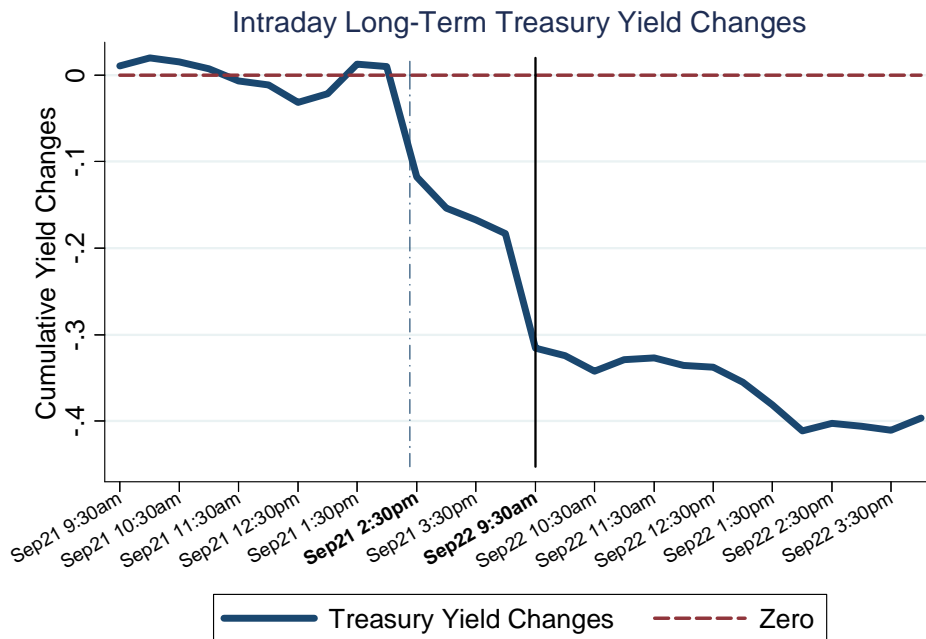


FIGURE 1C . THE YIELD CURVE, CIRCA THE MEP

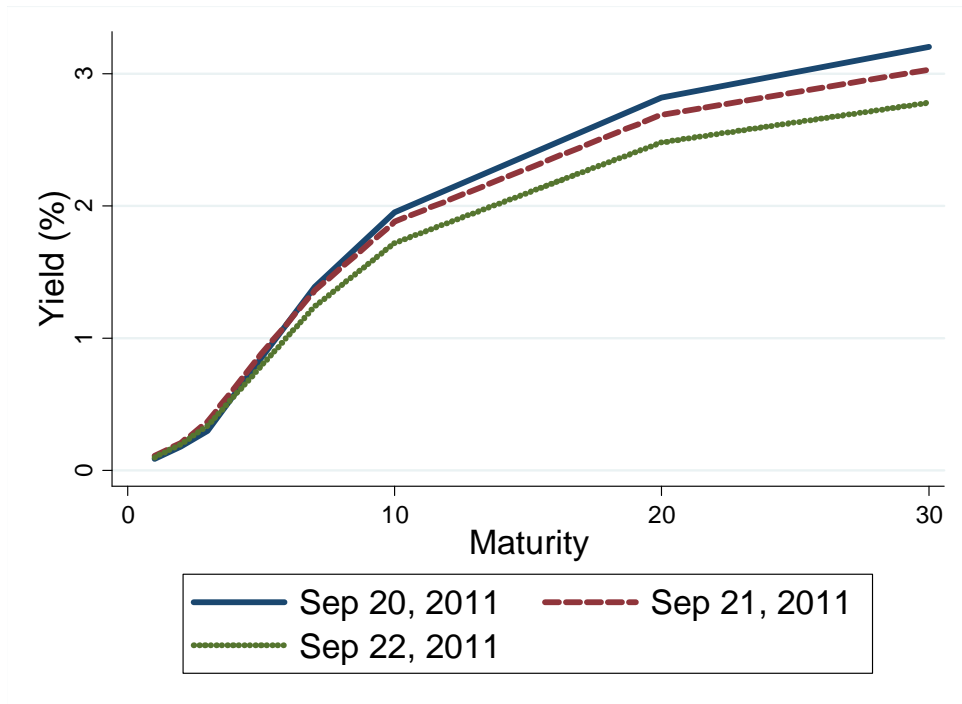


Figure 1A plots the yield on the 30-year (solid line) and one-year Treasury (red dashed line) over a 17-day window, centered on the MEP's announcement date (Sept. 21, 2011), which is indicated by the vertical dashed line. Figure 1B plots the cumulative change in the 30-year Treasury yield at 30-minute intervals over Sept. 21 and 22, 2011. The vertical dashed line indicates the announcement time of the MEP at 2:23 p.m. on Sept. 21, 2011. The solid vertical line indicates the stock market opening time of Sept. 22, 2011. Figure 1C plots the Treasury yield curve over a three-day window centered on Sept. 21, 2011.

FIGURE 2. COEFFICIENT ESTIMATES AROUND THE EVENT DATE

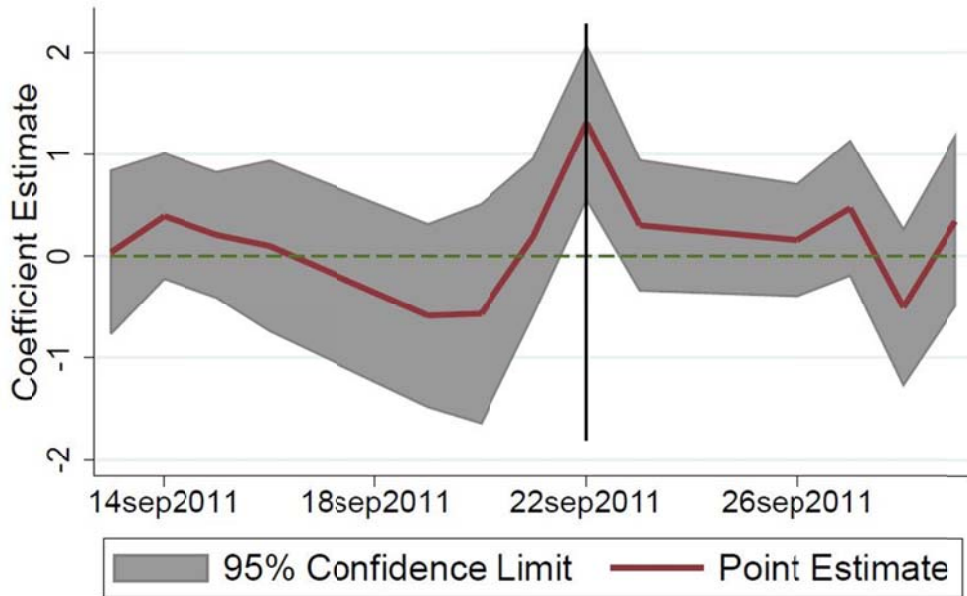
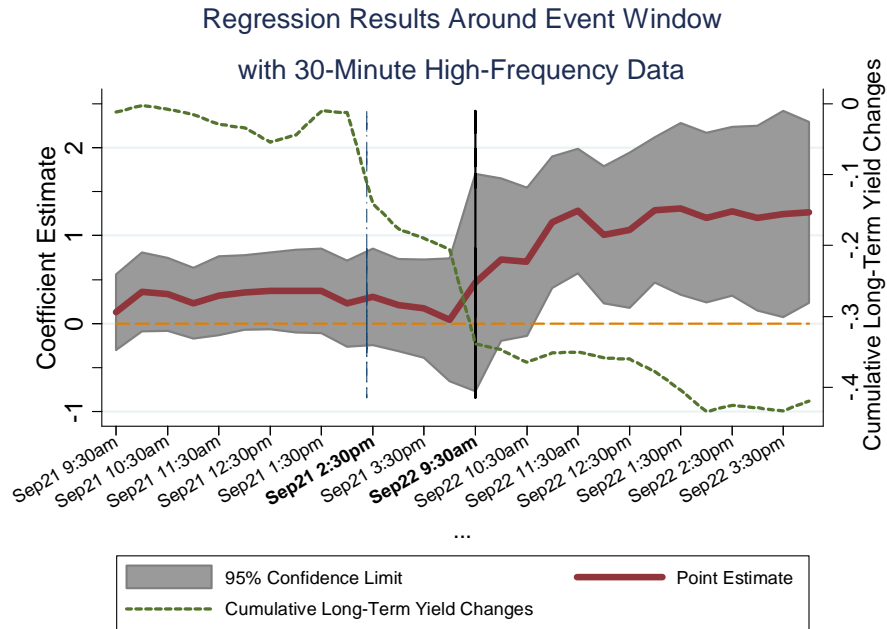


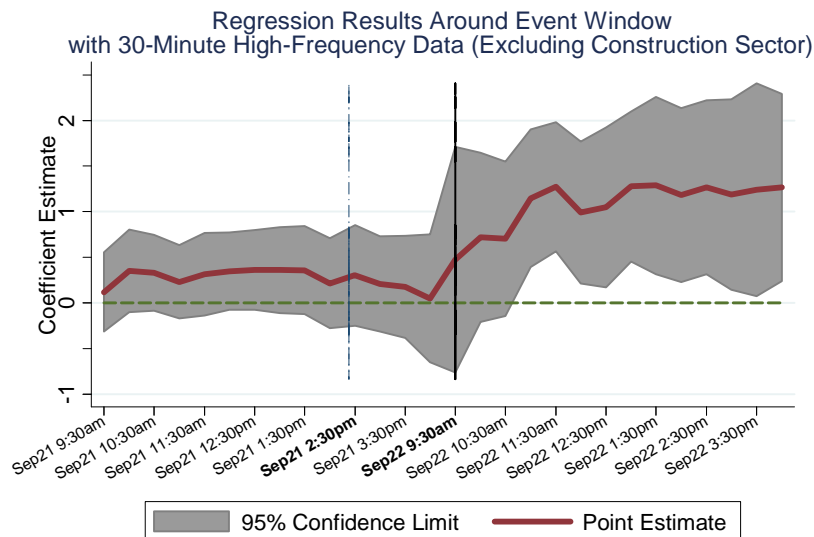
Figure 2 plots the long-term debt dependence point estimates and confidence bands obtained from a series of daily regressions, for a 10-day window around Sept. 22, 2011, event date, which is indicated by the vertical line. The regression specification is based on column 8 of Table 3, which regresses abnormal returns for a given day on long-term debt dependence and a full set of firm controls. Standard errors are clustered at the three-digit SIC level.

FIGURE 3A. ABNORMAL RETURNS AND LONG-TERM DEBT DEPENDENCE, SEPT. 21, 9:30 A.M.-SEPT. 22, 4 P.M.



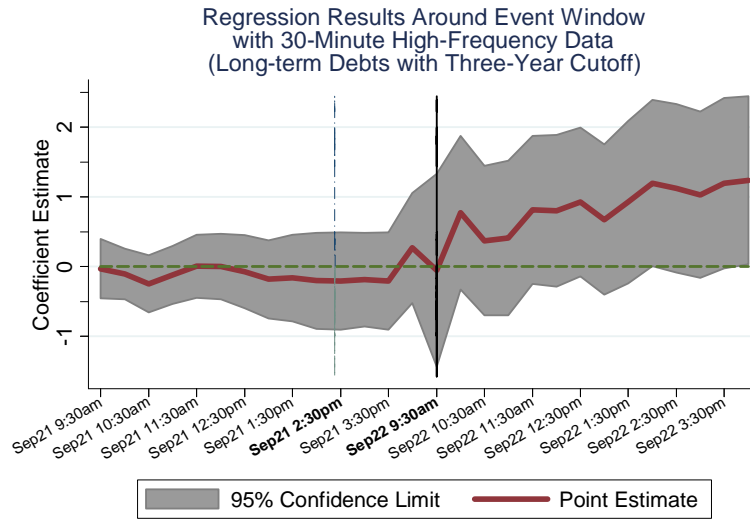
This figure plots the point estimates and 95% confidence bands for the long-term debt (one-year cutoff) variable obtained from 26 regressions, one for each 30-minute time mark. In these regressions, the dependent variable is the cumulative abnormal returns, beginning on Sept. 21, 9:30 a.m. through the end of the trading day Sept. 22. The other controls are as in column 8 of Table 3. Standard errors are clustered at the three-digit SIC level. The green dotted line shows the cumulative changes in 30-year Treasuries from 9:30 a.m. Sept. 21, 2011. The vertical dashed line indicates the announcement time of the MEP at 2:23 p.m. on Sept. 21, 2011. The solid vertical line indicates the stock market opening time of Sept. 22, 2011.

3B. ABNORMAL RETURNS AND LONG-TERM DEBT DEPENDENCE, SEPT. 21, 9:30 A.M.-SEPT. 22, 4 P.M.



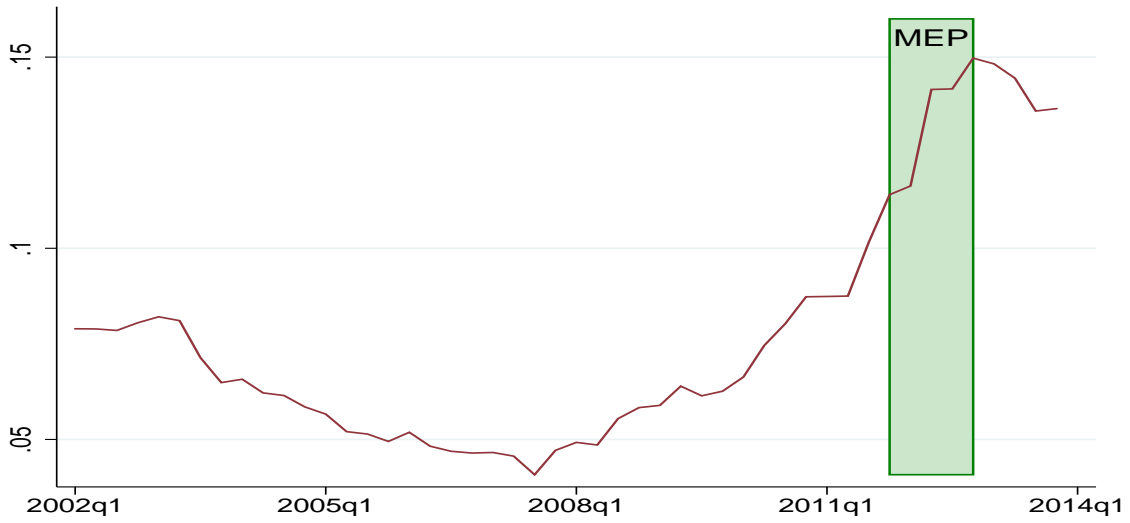
This figure plots the point estimates and 95% confidence bands for the long-term debt (one-year cutoff) variable obtained from 26 regressions, one for each 30-minute time mark. In these regressions, the dependent variable is the cumulative abnormal returns, beginning on Sept. 21, 9:30 a.m. through the end of the trading day Sept. 22. The other controls are as in column 8 of Table 3. Standard errors are clustered at the three-digit SIC level. Note that firms in the construction sector are excluded (SIC 1500 – 1799). The vertical dashed line indicates the announcement time of the MEP at 2:23 p.m. on Sept. 21, 2011. The solid vertical line indicates the stock market opening time of Sept. 22, 2011.

FIGURE 3C. ABNORMAL RETURNS AND LONG-TERM DEBT DEPENDENCE (THREE-YEAR CUTOFF) , SEPT. 21, 9:30 A.M.-SEPT. 22, 4 P.M.



This figure plots the point estimates and 95% confidence bands for the long-term debt (three-year cutoff) variable obtained from 26 regressions, one for each 30-minute time mark. In these regressions, the dependent variable is the cumulative abnormal returns, beginning on Sept. 21, 9:30 a.m. through the end of the trading day Sept. 22. The other controls are as in column 8 of Table 3. Standard errors are clustered at the three-digit SIC level. Note that these regressions use the full available sample of firms. The vertical dashed line indicates the announcement time of the MEP at 2:23 p.m. on Sept. 21, 2011. The solid vertical line indicates the stock market opening time of Sept. 22, 2011.

FIGURE 4. INSURERS' MEDIAN FIXED INCOME HOLDINGS RATED A- AS A SHARE OF TOTAL NAIC RISK CATEGORY 1



This figure plots the quarterly median holdings of fixed income securities rated A- as a share of the total NAIC risk category 1 (ratings AAA to A-) from 2002Q1 to 2013Q4. The source for these data is Thompson Reuters' eMAXX database of institutional bond holdings. The shaded MEP region covers 2011Q4 through 2012Q4.

TABLE 1. THE MEP BOND-BUYING PROGRAM

Weights and Amounts Used in the Purchase of the Treasury Securities During the MEP Bond-Buying Program					
	6-8 years	8-10 years	10-20 years	20-30 years	TIPS 6-30 years
Shares	32%	32%	4%	29%	3%
Amount (\$ billion)	192	192	24	174	18
Outstanding Stock of Treasuries, 2011 (\$ billion)					
		5-7 years	7-10 years	>=10 years	
		1,136	1,053	1,017	

The top panel of Table 1 shows the weights and amounts used in the purchase of the \$600 billion longer-dated Treasuries during the MEP. The bottom panel shows the stock of outstanding Treasuries at various maturities in the end of 2011. The maturity bin in each column is defined as the start year and one day less than the end year. For example, “6-8 years” means maturity between 6 years and 7 years and 364 days.

Sources:

NY Fed (www.newyorkfed.org/markets/opolicy/operating_policy_120620.html)

U.S. Treasury (www.treasury.gov/resource-center/data-chart-center/quarterly-refunding/Documents/Nov%202013%20QR%20-%20TBAC%20Discussion%20Charts%20%28Final%29.pdf)

TABLE 2A. SUMMARY STATISTICS

Variables	No. Obs.	MEAN	SD	5%	25%	50%	75%	95%
Long-Term Debt Dependence (One-Year Cutoff)	3297	0.82	0.25	0.22	0.74	0.92	1.00	1.00
Long-Term Debt Dependence (Three-Year Cutoff)	2713	0.43	0.3	0	0.15	0.45	0.67	0.9
Market Capitalization (billions)	2564	1.58	4.24	0.02	0.11	0.35	1.09	6.49
Book-to-Market Ratio	2563	0.56	0.39	0.11	0.29	0.49	0.75	1.24
Total Debts (Normalized by Total Assets)	2713	0.36	0.96	0.000	0.003	0.03	0.22	2.00
Long-term Debts (Normalized by Total Assets)	2713	0.20	0.19	0.00	0.06	0.17	0.30	0.57
Total Assets	2717	1.16	2.85	0.01	0.05	0.22	0.80	5.79
Net Income Growth	2601	0.19	0.35	-0.32	0.06	0.14	0.30	0.81
Return on Assets	2447	0.00	0.09	-0.18	-0.017	0.03	0.05	0.07
Income over Assets	2634	-0.03	0.79	-0.85	0.06	0.15	0.21	0.37
Average Q	2542	6.33	16.09	1.18	1.58	2.43	4.81	18.05
Investment Opportunity	2673	0.39	1.58	0.01	0.03	0.06	0.15	1.17
Short-Term Financial Constraint	2668	-0.13	1.16	-0.42	0.00	0.07	0.13	0.24
Capital Intensity	2634	0.06	0.05	0.02	0.03	0.05	0.07	0.14

This table reports the number of observation, mean, standard deviation, and, various percentiles of two measures of long-term debt dependence and the key control variables in the event study regressions. All variables are averages of firm-level characteristics through 2006. Variables are winsorized at the 1% level to reduce the effects of outliers. The data description in the appendix provides more detail on the variable constructions.

TABLE 2B. LONG-TERM DEBT DEPENDENCE (RATIO OF DEBT WITH MATURITY BEYOND ONE YEAR TO TOTAL DEBT)

	(1)	(2)
	OLS	Unconditional Correlations
Market Capitalization (billions)	-0.0015 (0.0035)	0.02
Book-to-Market Ratio	-0.0027 (0.014)	-0.01
Total Debt (Normalized by Total Assets)	-0.0099 (0.017)	0.10**
Long-Term Debt (Normalized by Total Assets)	0.40*** (0.044)	0.35**
Total Assets	0.0049 (0.0095)	0.07***
Net Income Growth	0.013 (0.019)	-0.02
Return on Assets	0.015 (0.11)	0.07**
Income over Assets	0.033*** (0.012)	0.12***
Average Q	-0.0011** (0.00045)	-0.17***
Investment Opportunity	0.0030 (0.0049)	0.02
Short-Term Financial Constraint	-0.0029* (0.0016)	0.01
Capital Intensity	0.26** (0.13)	0.03
Observations	2373	
R-Squared	0.233	

This table investigates the relationship between long-term debt dependence and other firm characteristics; all variables are averaged through 2006, creating a cross-section. In column 1, the dependent variable in the regression is long-term debt dependence; the regression also includes sector fixed effects (three-digit SIC code), and standard errors (in parentheses) are clustered at the sector level. Column 2 reports the simple bivariate correlation between long-term debt dependence and each variable. *** p<0.01, ** p<0.05, * p<0.1.

TABLE 3. STOCK RETURNS AND MEP

	Abnormal Returns on Sept. 22, 2011								
	(1)	(2)	(3)	(4)	(5)	(6)	(7)	(8)	(9)
Long-Term Debt Dependence (One-Year Cutoff)	0.85** (0.39)	0.91** (0.43)	0.90** (0.36)	1.25*** (0.36)	1.32*** (0.39)	1.01*** (0.39)	1.87*** (0.48)	1.40*** (0.39)	
Long-Term Debt Dependence (Three-Year Cutoff)									0.67** (0.34)
Market Capitalization (billions)			-0.0095 (0.015)	-0.0038 (0.016)	0.00071 (0.019)	0.0056 (0.0076)	-0.020 (0.022)	0.0041 (0.020)	0.0041 (0.022)
Book-to-Market Ratio			-0.62*** (0.19)	-0.66*** (0.19)	-0.59*** (0.20)	-0.39 (0.35)	-0.76*** (0.17)	-0.49** (0.23)	-0.53** (0.24)
Total Debt (Normalized by Total Assets)				-0.072 (0.083)	-0.019 (0.11)	-0.013 (0.051)	0.0100 (0.10)	-0.033 (0.11)	-0.074 (0.12)
Long-Term Debt (Normalized by Total Assets)				-1.37*** (0.44)	-1.52*** (0.53)	-0.19 (0.55)	-1.19** (0.50)	-1.58*** (0.54)	-1.35** (0.55)
Total Assets					-0.022 (0.057)	-0.012 (0.019)	-0.0094 (0.052)	-0.024 (0.060)	-0.027 (0.062)
Net Income Growth					-0.35 (0.26)	-0.0066 (0.11)	0.044 (0.36)	-0.36 (0.26)	-0.39 (0.27)
Return on Assets					1.87 (1.65)	3.29 (2.06)	0.042 (1.10)	1.62 (1.64)	1.43 (1.68)
Income over Assets					-0.16 (0.13)	-0.56 (0.55)	0.11 (0.21)	-0.11 (0.14)	-0.13 (0.14)
Average Q					0.019** (0.0074)	-0.0043 (0.047)	0.019* (0.011)	0.019** (0.0077)	0.017** (0.0082)
Investment Opportunity					-0.011 (0.093)	-0.23* (0.14)	-0.087 (0.056)	-0.0080 (0.093)	0.0073 (0.098)
Short-Term Financial Constraint					0.023 (0.023)	0.015 (0.081)	0.013 (0.029)	0.017 (0.022)	0.018 (0.022)
Capital Intensity					-1.91 (2.21)	-2.68 (3.74)	-2.79 (2.56)	-1.55 (2.28)	-0.78 (2.32)
Sensitivity to Monetary Shocks								45.5 (63.5)	31.1 (70.5)
Fixed Effects		SIC 3	SIC 3	SIC 3	SIC 3	SIC 3	SIC 3	SIC 3	SIC 3
Long-Term Debt Average	pre-2007 average	pre-2007 average	pre-2007 average	pre-2007 average	pre-2007 average	pre-2007 average	before Sep 21, 2011	pre-2007 average	pre-2007 average
Control Variable Average	pre-2007 average	pre-2007 average	pre-2007 average	pre-2007 average	pre-2007 average	pre-2007 average last available pre-2007	before Sep 21, 2011	pre-2007 average	pre-2007 average
Observations	2618	2618	2492	2492	2369	2369	2759	2341	2291
R-Squared	0.003	0.145	0.150	0.153	0.157	0.152	0.158	0.151	0.150

This table reports regression results from the event study with daily stock returns. The dependent variable is the abnormal stock returns on September 22, 2011, after controlling for S&P 500 returns. Standard errors in parentheses are clustered at the SIC-3 industry level.

*** p<0.01, ** p<0.05, * p<0.1. Periods of control variables that are used for average are given in the table.

TABLE 4. ALTERNATIVE DATES

(A) Around Same Time of Year											
2009	Sep 14	Sep 15	Sep 16	Sep 17	Sep 18	Sep 21	Sep 22	Sep 23	Sep 24	Sep 25	Sep 28
	-1.05*	-0.13	0.42	-0.084	0.61	-0.017	-0.82*	-0.15	0.65	-0.59	0.18
	(0.62)	(0.53)	(0.46)	(0.42)	(0.52)	(0.47)	(0.42)	(0.43)	(0.44)	(0.38)	(0.57)
2010	Sep 14	Sep 15	Sep 16	Sep 17	Sep 20	Sep 21	Sep 22	Sep 23	Sep 24	Sep 27	Sep 28
	0.016	-0.37	-0.27	0.62*	0.48	-0.33	-0.27	0.35	0.034	-0.33	0.34
	(0.27)	(0.29)	(0.36)	(0.35)	(0.60)	(0.40)	(0.48)	(0.26)	(0.33)	(0.37)	(0.33)
2012	Sep 14	Sep 17	Sep 18	Sep 19	Sep 20	Sep 21	Sep 24	Sep 25	Sep 26	Sep 27	Sep 28
	0.18	-0.60	-0.57	-0.20	-0.19	-0.35	-0.097	0.19	-0.41	0.18	0.049
	(0.39)	(0.37)	(0.52)	(0.42)	(0.44)	(0.43)	(0.44)	(0.29)	(0.34)	(0.37)	(0.27)
(B) Around Announcement of Different LSAPs											
QE2	Oct 27	Oct 28	Oct 29	Nov 1	Nov 2	Nov 3	Nov 4	Nov 5	Nov 8	Nov 9	Nov 10
2010	0.21	0.51	0.28	-0.45	0.63**	0.058	0.11	-0.29	-0.78*	0.015	0.39
	(0.44)	(0.40)	(0.39)	(0.45)	(0.31)	(0.42)	(0.36)	(0.52)	(0.42)	(0.34)	(0.35)
MEP	Sep 14	Sep 15	Sep 16	Sep 19	Sep 20	Sep 21	Sep 22	Sep 23	Sep 26	Sep 27	Sep 28
2011	0.39	0.21	0.099	-0.58	-0.57	0.19	1.40***	0.30	0.16	0.47	-0.50
	(0.31)	(0.31)	(0.42)	(0.46)	(0.55)	(0.39)	(0.39)	(0.32)	(0.28)	(0.34)	(0.39)
QE3	Sep 6	Sep 7	Sep 10	Sep 11	Sep 12	Sep 13	Sep 14	Sep 17	Sep 18	Sep 19	Sep 20
2012	0.98**	-0.72*	-0.051	0.30	0.073	-0.70	0.17	-0.60	-0.56	-0.20	-0.18
	(0.49)	(0.37)	(0.44)	(0.37)	(0.44)	(0.47)	(0.39)	(0.37)	(0.52)	(0.42)	(0.44)

This table reports the coefficient estimates and standard errors of long-term debt dependence on different dates. The regression specification is the same as column 8 of Table 3. The shaded columns indicate the announcement dates of each program. The one, two, and three stars indicate 10%, 5%, and 1% significance levels, respectively. Standard errors are clustered at the SIC-3 industry level.

TABLE 5A. THE CHANGE IN LONG-TERM DEBT AND THE MEP

	(1)	(2)
	Long-Term Debt Growth	Short-Term Debt Growth
Long-Term Debt Dependence * MEP	0.30** (0.14)	0.39 (0.27)
Market Capitalization (billions) * MEP	-0.00015 (0.00)	-0.0009 (0.00)
Book-to-Market Ratio * MEP	0.013 (0.01)	-0.0011 (0.01)
Total Debt (Normalized by Total Assets) * MEP	0.019** (0.01)	0.010* (0.01)
Long-Term Debt (Normalized by Total Assets) * MEP	-0.068* (0.04)	-0.015 (0.02)
Total Assets * MEP	-0.0057** (0.00)	-0.0028 (0.00)
Net Income Growth * MEP	0.049 (0.03)	0.025 (0.02)
Return on Assets * MEP	-0.28 (0.18)	0.043 (0.10)
Income over Assets * MEP	0.023 (0.02)	-0.0088 (0.02)
Average Q * MEP	0.00034 (0.00)	0.0005 (0.00)
Investment Opportunity * MEP	-0.014 (0.01)	-0.0065 (0.01)
Short-Term Financial Constraint * MEP	0.0029 (0.00)	0.00093 (0.00)
Capital Intensity * MEP	0.15 (0.22)	-0.25 (0.16)
Other Controls	time varying firm characteristics	time varying firm characteristics
Fixed Effects	firm and time fixed effects	firm and time fixed effects
Number of Observations	15919	5824
R-Squared	0.303	0.286

The dependent variable in column 1 is the growth in long-term debt outstanding (one year cutoff). In column 2, the dependent variable is the growth in short-term debt. Standard errors are clustered by firms and years. *** p<0.01, ** p<0.05, * p<0.1. The MEP indicator variable equals 1 if the year is 2012 and 0 otherwise. The sample period is 2007-2013, and all specifications include firm fixed effects, and all the time invariant firm observables in column 5 of Table 3 interacted with the MEP indicator variable. All time invariant variables are observed pre-2007. These variables also enter linearly as time varying controls. Variables are winsorized at the 1% level.

TABLE 5B. THE CHANGE IN LONG-TERM DEBT, THE MEP, AND FINANCIAL FLEXIBILITY

	(1)	(2)	(3)	(4)	(5)	(6)	(7)	(8)	(9)	(10)	(11)	(12)
Variables	Cash Balances		Cash Flow		Tobin's Q		Capitalization		2011 Credit Rating		Sales Growth	
	Low	High	Low	High	Low	High	Low	High	AA- or worse	AA or better	Low	High
Long-Term Debt	0.20	0.35**	0.19	0.37**	0.11	0.39**	0.098	0.34**	0.20	0.35	0.13	0.66**
Dependence * MEP	(0.22)	(0.15)	(0.26)	(0.15)	(0.22)	(0.15)	(0.24)	(0.15)	(0.22)	(8.30)	(0.15)	(0.26)
Number of Observations	3965	11954	3959	11960	3955	11964	3965	11954	6799	147	11774	4145

The dependent variable is the growth in long-term debt outstanding (one-year cutoff), and all regressions include the same controls as in column 1 of Table 5A. Columns labeled "low" are those firms in the bottom quartile of the financial flexibility measure. "High" indicates the sample of firms outside the bottom quartile. Standard errors are clustered by firms and years. *** p<0.01, ** p<0.05, * p<0.1. The MEP indicator variable equals 1 if the year is 2012 and 0 otherwise. The sample period is 2007--2013. Iterations terms of MEP and average firm characteristics before 2007 are included in the regressions. In addition, time varying firm characteristics are included all regressions. These variables are Market capitalization, Book-to-Market Ratio, Total Debt, Long-term Debt, Total Assets, Net Income Growth, Return on Assets, Income over Assets, Average Q, Investment Opportunity, Short-term Financial Constraint, and Capital Intensity.

TABLE 6A. DID A FIRM ISSUE DEBT?

	(1)	(2)	(3)	(4)
Variables	No Controls	AR(1)	Firm Fixed Effects	Firm Controls
Long-Term Debt Dependence * MEP	0.050*** (0.0089)	0.049*** (0.010)	0.045*** (0.0095)	0.035** (0.017)
Observations	35771	29152	35771	21190
R-Squared	0.013	0.163	0.469	0.503

The dependent variable equals 1 if a firm issued debt in the calendar year and 0 otherwise. Standard errors clustered at the firm level for columns (1) and (2) and are clustered at firm and year levels for the other columns. *** p<0.01, ** p<0.05, * p<0.1. All specifications include year effects. Column 2 include a first-order autoregressive term. Column 3 includes firm fixed effects. Column 4 includes all the time invariant firm observables in column 5 of Table 3 interacted with the MEP indicator variable. The MEP indicator variable equals 1 if the year is 2012 and 0 otherwise. The sample period is 2007—2013. Iterations terms of MEP and average firm characteristics before 2007 are included in the regressions. In addition, time varying firm characteristics are included all regressions. These variables are Market capitalization, Book-to-Market Ratio, Total Debt, Long-term Debt, Total Assets, Net Income Growth, Return on Assets, Income over Assets, Average Q, Investment Opportunity, Short-term Financial Constraint, and Capital Intensity.

TABLE 6B. DID A FIRM ISSUE DEBT, BY FINANCIAL CONSTRAINTS

	(1)	(2)	(3)	(4)	(5)	(6)	(7)	(8)	(9)	(10)	(11)	(12)
Variables	Cash Balances		Cash Flow		Tobin's Q		Capitalization		2011 Credit Rating		Sales Growth	
	Low	High	Low	High	Low	High	Low	High	AA- or worse	AA or better	Low	High
Long-Term Debt Dependence * MEP	-0.0098 (0.05)	0.044*** (0.02)	0.017 (0.01)	0.040** (0.02)	-0.0025 (0.04)	0.043** (0.02)	0.0011 (0.00)	0.038* (0.02)	0.05 (0.11)	0.73 (0.75)	0.014 (0.02)	0.080*** (0.01)
Number of Observations	5070	16120	4113	17077	5159	16031	4388	16802	7176	151	4786	14307

The dependent variable equals 1 if a firm issued debt in the calendar year and 0 otherwise, and all regressions use the same controls as in column 4 of Table 6A. Standard errors clustered at the firm and year levels for the other columns. *** p<0.01, ** p<0.05, * p<0.1. Columns labeled “low” are those firms in the bottom quartile of the financial flexibility measure. “High” indicates the sample of firms outside the bottom quartile. The sample period is 2007-2013. Iterations terms of MEP and average firm characteristics before 2007 are included in the regressions. In addition, time varying firm characteristics are included all regressions. These variables are Market capitalization, Book-to-Market Ratio, Total Debt, Long-term Debt, Total Assets, Net Income Growth, Return on Assets, Income over Assets, Average Q, Investment Opportunity, Short-term Financial Constraint and Capital Intensity.

TABLE 7. INTENSIVE MARGIN: SPREADS

	(1)	(2)	(3)	(4)	(5)
Variables	Category 1	Category 1	AAA to BBB+	Cats 1 & 2	Cats 1 & 2
A- Rating*MEP	-0.231** (0.11)	-0.295* (0.17)			-0.270*** (0.10)
BBB+ Rating*MEP			0.149 (0.14)		
BBB- Rating*MEP				0.0961 (0.13)	
Observations	738	738	994	1,590	1,590
R-Squared	0.811	0.819	0.817	0.826	0.826

The dependent variable is the log spread between a bond and the corresponding Treasury of the same maturity. Numbers in parentheses are standard errors clustered at the issuer (firm) level. *** p<0.01, ** p<0.05, * p<0.1. All specifications include firm, year, and quarter fixed effects; the time-varying firm observables in Table 5A; the log of the principal issued; log maturity; and the bond credit rating; these bond-level variables are also interacted with the MEP. All continuous variables are winsorized at the 1 percent level. Columns 2—5 also include the time-varying firm observables interacted with the MEP. Category 1 bonds are rated AAA through A-. Category 2 bonds are rated BBB+ through BBB-. The MEP indicator variable equals 1 if the year is 2012 and 0 otherwise. The sample period is 2007—2013.

TABLE 8A. THE REAL EFFECTS OF THE MEP

	(1)	(2)	(3)	(4)
	Growth in PPENT	Growth in Employees	Growth in Cash Holdings	Growth in Dividend and Share Repurchase
Long-Term Debt Dependence * MEP	0.093** (0.044)	0.067** (0.026)	0.033 (0.092)	0.070 (0.18)
Market Capitalization (billions) * MEP	-0.00015 (0.0017)	-0.00090 (0.0013)	-0.00025 (0.0053)	-0.0033 (0.0087)
Book-to-Market Ratio * MEP	0.013 (0.0098)	-0.0011 (0.0053)	-0.026 (0.020)	0.0032 (0.034)
Total Debt (Normalized by Total Assets) * MEP	0.019** (0.0080)	0.010* (0.0058)	0.0018 (0.022)	-0.037 (0.038)
Long-Term Debt (Normalized by Total Assets) * MEP	-0.068* (0.040)	-0.015 (0.022)	-0.015 (0.11)	-0.0057 (0.15)
Total Assets * MEP	-0.0057** (0.0025)	-0.0028 (0.0018)	0.0034 (0.0071)	0.0035 (0.011)
Net Income Growth * MEP	0.049 (0.030)	0.025 (0.021)	0.12 (0.072)	0.063 (0.15)
Return on Assets * MEP	-0.28 (0.18)	0.043 (0.098)	-0.40 (0.37)	0.099 (0.64)
Income over Assets * MEP	0.023 (0.022)	-0.0088 (0.016)	-0.018 (0.049)	-0.013 (0.096)
Average Q * MEP	0.00034 (0.0011)	0.00050 (0.00072)	-0.00071 (0.0023)	-0.0033 (0.0039)
Investment Opportunity * MEP	-0.014 (0.012)	-0.0065 (0.0091)	-0.019 (0.021)	-0.11* (0.065)
Short-Term Financial Constraint * MEP	0.0029 (0.0031)	0.00093 (0.0021)	0.0059 (0.0084)	-0.023* (0.012)
Capital Intensity * MEP	0.15 (0.22)	-0.25 (0.16)	-0.61 (0.58)	-1.65* (0.86)
Controls	time varying firm characteristics	time varying firm characteristics	time varying firm characteristics	time varying firm characteristics
Fixed Effects	firm and time fixed effects	firm and time fixed effects	firm and time fixed effects	firm and time fixed effects
Number of Observations	20959	19934	20723	11400

The dependent variable in column 1 is the growth in plant and equipment expenditures (PPENT). In column 2, it is the growth in the number of employees; column 3 uses the growth in cash holdings and column 4 is the growth in dividend and share repurchases. Standard errors are clustered at the firm-year level. *** p<0.01, ** p<0.05, * p<0.1. The MEP indicator variable equals 1 if the year is 2012 and 0 otherwise. The sample period is 2007–2013. Time varying firm characteristics are included all regressions. These variables are Market capitalization, Book-to-Market Ratio, Total Debt, Long-term Debt, Total Assets, Net Income Growth, Return on Assets, Income over Assets, Average Q, Investment Opportunity, Short-term Financial Constraint, and Capital Intensity.

TABLE 8B. THE REAL EFFECTS OF THE MEP (ALTERNATIVE MEASURE OF LONG-TERM DEPENDENCE)

	(1)	(2)	(3)	(4)
	Growth in PPENT	Growth in Employees	Growth in Cash Holdings	Growth in Dividend and Share Repurchase
Long-Term Debt Dependence (Three-Year Cutoff) * MEP	0.069** (0.033)	0.047** (0.022)	0.14 (0.097)	-0.025 (0.14)
Number of Observations	20313	19338	20089	11028

Table 8B replicates Table 8A, but long-term debt dependence is defined as the ratio of debt with remaining maturity in excess of three years divided by total debt. Standard errors are clustered at the firm-year level. *** p<0.01, ** p<0.05, * p<0.1. The MEP indicator variable equals 1 if the year is 2012 and 0 otherwise. The sample period is 2007--2013. Iterations terms of MEP and average firm characteristics before 2007 are included in the regressions. In addition, time varying firm characteristics are included all regressions. These variables are Market capitalization, Book-to-Market Ratio, Total Debt, Long-term Debt, Total Assets, Net Income Growth, Return on Assets, Income over Assets, Average Q, Investment Opportunity, Short-term Financial Constraint and Capital Intensity.

TABLE 8C. EMPLOYMENT GROWTH, BY FINANCIAL CONSTRAINTS

	(1)	(2)	(3)	(4)	(5)	(6)	(7)	(8)
Variables	Cash Balances		Cash Flow		Tobin's Q		Capitalization	
	Low	High	Low	High	Low	High	Low	High
Long-Term Debt Dependence * MEP	0.043 (0.048)	0.075*** (0.029)	-0.068 (0.053)	0.12*** (0.029)	0.052 (0.053)	0.067** (0.030)	0.043 (0.052)	0.075** (0.031)
Number of Observations	4043	15892	5544	14391	4693	15242	5774	14161

Table 8C replicates the specification in column 2 of Table 8A by different indicators of financing constraints. Columns labeled "low" are those firms in the bottom quartile of the financial flexibility measure. "High" indicates the sample of firms outside the bottom quartile. Standard errors are clustered at the firm-year level. *** p<0.01, ** p<0.05, * p<0.1. The MEP indicator variable equals 1 if the year is 2012 and 0 otherwise. The sample period is 2007--2013. Iterations terms of MEP and average firm characteristics before 2007 are included in the regressions. In addition, time varying firm characteristics are included all regressions. These variables are Market capitalization, Book-to-Market Ratio, Total Debt, Long-term Debt, Total Assets, Net Income Growth, Return on Assets, Income over Assets, Average Q, Investment Opportunity, Short-term Financial Constraint and Capital Intensity.

TABLE 8D. PLANT AND EQUIPMENT EXPENDITURES GROWTH, BY FINANCIAL CONSTRAINTS

	(1)	(2)	(3)	(4)	(5)	(6)	(7)	(8)
Variables	Cash Balances		Cash Flow		Tobin's Q		Capitalization	
	Low	High	Low	High	Low	High	Low	High
Long-Term Debt Dependence * MEP	0.036 (0.078)	0.11** (0.048)	0.037 (0.096)	0.12*** (0.046)	0.077 (0.087)	0.11** (0.049)	0.086 (0.095)	0.049 (0.046)
Number of Observations	4342	16620	5933	15029	5017	15945	6280	14682

Table 8D replicates the specification in column 1 of Table 8A by different indicators of financing constraints. Columns labeled "low" are those firms in the bottom quartile of the financial flexibility measure. "High" indicates the sample of firms outside the bottom quartile. Standard errors are clustered at the firm-year level. *** p<0.01, ** p<0.05, * p<0.1. The MEP indicator variable equals 1 if the year is 2012 and 0 otherwise. The sample period is 2007-2013. Iterations terms of MEP and average firm characteristics before 2007 are included in the regressions. In addition, time varying firm characteristics are included all regressions. These variables are Market capitalization, Book-to-Market Ratio, Total Debt, Long-term Debt, Total Assets, Net Income Growth, Return on Assets, Income over Assets, Average Q, Investment Opportunity, Short-term Financial Constraint, and Capital Intensity.

References

- Adrian, Tobias, Paolo Colla, and Hyun Shin. 2013. "Which Financial Frictions? Parsing the Evidence from the Financial Crisis of 2007—09," *NBER Macroeconomics Annual*, Volume 27, Daron Acemoglu, Jonathan Parker, and Michael Woodford, editors, 159-214.
- Adrian, Tobias, and Hyun Shin. 2010. "The Changing Nature of Financial Intermediation and the Financial Crisis of 2007–2009," *Annual Review of Economics*, 2(1), 603-618.
- Badoer, Dominique C., and Christopher M. James. Forthcoming. "The Determinants of Long-Term Corporate Debt Issuances," *Journal of Finance*.
- Barclay, Michael J., and Clifford W. Smith Jr. 1995. "The Maturity Structure of Corporate Debt," *Journal of Finance*, 50(2) 609-631.
- Bates, Thomas W., Kathleen M. Kahle, and René M. Stulz. 2009. "Why Does US Firms Hold So Much More Cash Than They Used to?" *Journal of Finance* 64(5).
- Bernanke, Ben S., and Kenneth N. Kuttner. 2005. "What Explains the Stock Market's Reaction to Federal Reserve Policy?" *Journal of Finance*, 60(3), 1221-1257.
- Becker, Bo, and Victoria Ivashina. Forthcoming. "Reaching for Yield in the Bond Market," *Journal of Finance*.
- Becker, Bo, and Victoria Ivashina. 2014. "Cyclicality of Credit Supply: Firm Level Evidence," *Journal of Monetary Economics*, 62(C), 76-93.
- Benmelech, Ephraim, Ralf Meisenzahl and Rodney Ramcharan. 2014. "The Real Effects of Liquidity During the Financial Crisis: Evidence from Automobiles," SSRN Working Paper 2511181.
- Berglof, Erik, and Ernst-Ludwig Thadden. 1994. "Short-Term Versus Long-Term Interests: Capital Structure with Multiple Investors," *Quarterly Journal of Economics*, 109(4), 1055-84.
- Bloom, Nicholas. 2009. "The Impact of Uncertainty Shocks," *Econometrica*, 77(3), 623-685.
- Borio, Claudio, and Haibin Zhu. 2012. "Capital Regulation, Risk-Taking and Monetary Policy: A Missing Link in the Transmission Mechanism?" *Journal of Financial Stability*, 8(4), 236-251.
- Cahill, Michael E., Stefania D'Amico, Canlin Li, and Jonh S. Sears. 2013. "Duration Risk Versus Local Supply Channel in Treasury Yields: Evidence from the Federal Reserve's Asset Purchase Announcements," Finance and Economics Discussion Series, Board of Governors of the Federal Reserve System (U.S.).
- Chodorow-Reich, Gabriel. 2014. "Effects of Unconventional Monetary Policy on Financial Institutions," *Brookings Papers on Economic Activity*, 48(1), 155-227.
- Crouzet, Nicolas. 2014. "Firm Investment and the Composition of Debt," SSRN Working Paper 2524589.

- Diamond, Douglas W. 1991. "Debt Maturity Structure and Liquidity Risk," *Quarterly Journal of Economics*, 106(3), 709-37.
- DeAngelo, Harry, and Richard Roll. 2015. "How Stable Are Corporate Capital Structures?" *Journal of Finance*, 70(1) 373–418.
- DiMaggio, Marco, and Marcin Kacperczyk. 2015. "The Unintended Consequences of the Zero Lower Bound Policy," SSSRN Working Paper 2458587.
- DiMaggio, Marco, Amir Kermani, and Rodney Ramcharan. 2014. "Monetary Policy Pass Through: Household Consumption and Voluntary Deleveraging," SSRN Working Paper 2489793.
- Eggertsson, Gauti. B., and Michael Woodford. 2006. "Optimal Monetary and Fiscal Policy in a Liquidity Trap," In *NBER International Seminar on Macroeconomics 2004*, National Bureau of Economic Research, Inc., 75-144.
- Estrella, Arturo, and Gikas A. Hardouvelis. 1991. "The Term Structure as a Predictor of Real Economic Activity," *Journal of Finance*, 46(2), 555-76.
- Farre-Mensa, Joan, and Alexander Ljungqvist. 2015. "Do Measures of Financial Constraints Measure Financial Constraints?" SSRN Working Paper 2338575.
- Faulkender, Michael, and Mitchell A. Petersen. 2006. "Does the Source of Capital Affect Capital Structure?" *Review of Financial Studies*, 19(1), 45-79.
- Fazzari, Steven M., R. Glenn Hubbard, and Bruce C. Petersen. 1988. "Financing Constraints and Corporate Investment," *Brookings Papers on Economic Activity*, 19(1), 141-206
- Flannery, Mark J. 1986. "Asymmetric Information and Risky Debt Maturity Choice," *Journal of Finance*, 41(1), 19-37.
- Gagnon, Joseph, Matthew Raskin, Julie Remache, and Brian Sack. 2011. "Large-Scale Asset Purchases by the Federal Reserve: Did They Work?" *Economic Policy Review* (May), 41-59.
- Gertler, Mark, and Peter Karadi. 2011. "A model of unconventional monetary policy," *Journal of Monetary Economics*, 58(1), 17-34.
- Gertler, Mark, and Peter Karadi. 2013. "QE 1 vs. 2 vs. 3. . . : A Framework for Analyzing Large-Scale Asset Purchases as a Monetary Policy Tool," *International Journal of Central Banking*, 9(1), 5-53.
- Gorodnichenko, Yuriy, and Michael Weber. 2013. "Are Sticky Prices Costly? Evidence from the Stock Market," NBER Working Papers, National Bureau of Economic Research, Inc.
- Greenwood, Robin, and Samuel G. Hanson. 2013. "Issuer Quality and Corporate Bond Returns," *Review of Financial Studies*, 26(6), 1483-1525.
- Greenwood, Robin, Samuel G. Hanson, and Jeremy C. Stein, 2010. "A Gap-Filling Theory of Corporate Debt Maturity Choice," *Journal of Finance*, 65(3), 993-1028.

- Guedes, Jose, and Tim Opler. 1996. "The Determinants of the Maturity of Corporate Debt Issues," *Journal of Finance*, 51(5), 1809-1833.
- Guerrieri, Veronica, and Péter Kondor. 2012. "Fund Managers, Career Concerns, and Asset Price Volatility," *American Economic Review*, 102(5), 1986-2017.
- Gürkaynak, Refet S., Brian Sack, and Eric Swanson. 2005. "Do Actions Speak Louder Than Words? The Response of Asset Prices to Monetary Policy Actions and Statements," *International Journal of Central Banking*, 1(1).
- Hamilton, James D., and Jing Cynthia Wu. 2012. "The Effectiveness of Alternative Monetary Policy Tools in a Zero Lower Bound Environment," *Journal of Money, Credit and Banking*, 44(2), 3-46.
- Hanson, Samuel G., and Jeremy C. Stein. Forthcoming. "Monetary policy and long-term real rates," *Journal of Financial Economics*.
- Hart, Oliver, and John Moore. 1994. "A Theory of Debt Based on the Inalienability of Human Capital," *Quarterly Journal of Economics*, 109(4), 841-79.
- Hoshi, Takeo, Anil Kashyap, and David Scharfstein. 1991. "Corporate Structure, Liquidity, and Investment Evidence from Japanese Industrial Groups," *Quarterly Journal of Economics*, 106(1), 33-60.
- Huang, Xin, Hao Zhou, and Haibin Zhu. 2009. "A Framework for Assessing the Systemic Risk of Major Financial Institutions," *Journal of Banking and Finance*, 33(11) 2036-2049.
- Hubbard, R. Glenn, Anil Kashyap, and Toni Whited. 1995. "International Finance and Firm Investment," *Journal of Money, Credit and Banking*, 27(3), 683-701.
- Kaplan, Steven N., and Luigi Zingales. 1997. "Do Investment-Cash Flow Sensitivities Provide Useful Measures of Financing Constraints," *Quarterly Journal of Economics*, 112(1), 169-215.
- Keys, Benjamin J., Tomasz Piskorski, Amit Seru, and Vincent Yao. 2014. "Mortgage Rates, Household Balance Sheets, and the Real Economy," NBER Working Paper 20561.
- King, Mervyn. 2013. "Monetary Policy: Many Targets, Many Instruments. Where Do We Stand?" remarks given by the Governor of the Bank of England at the IMF Conference on Rethinking Macro Policy II: First Steps and Early Lessons.
- Krishnamurthy, Arvind, and Annette Vissing-Jorgensen. 2011. "The Effects of Quantitative Easing on Interest Rates: Channels and Implications for Policy," *Brookings Papers on Economic Activity*, 43(2 (Fall)), 215-287.
- Krishnamurthy, Arvind, and Annette Vissing-Jorgensen. 2013. "The Ins and Outs of LSAPs" *Proceedings*.
- Kuttner, Kenneth N. 2001. "Monetary policy surprises and interest rates: Evidence from the Fed funds futures market," *Journal of Monetary Economics*, 47(3), 523-544.

- MacKinlay, A. Craig. 1997. "Event Studies in Economics and Finance," *Journal of Economic Literature*, 35(1), 13-39.
- Myers, Stewart C. 1977. "Determinants of Corporate Borrowing," *Journal of Financial Economics*, 5(2), 147-175.
- Morris, Stephen, and Hyun Song Shin. 2012. "Contagious Adverse Selection," *American Economic Journal: Macroeconomics*, 4(1), 1-21.
- NAIC. 2014. "New Issuance of Corporate Bonds and U.S. Insurer Corporate Bond Portfolios," Capital Markets Special Report 3/7/14.
- Ramcharan, Rodney, Skander Van den Heuvel, and Stephane Verani. Forthcoming. "From Wall Street to Main Street: the Impact of the Financial Crisis on Consumer Credit Supply," *Journal of Finance*.
- Rajan, Raghuram. 2013. "A Step in the Dark: Unconventional Monetary Policy After the Crisis," Andrew Crockett Memorial Lecture.
- Rauh, Joshua D., and Amir Sufi. 2010. "Capital Structure and Debt Structure," *Review of Financial Studies*, 23(12), 4242-4280.
- Shleifer, Andrei, and Robert Vishny. 2011. "Fire Sales in Finance and Macroeconomics," *Journal of Economic Perspectives*, 25(1), 29-48.
- Stein, Jeremy C. 2013. "Yield-Oriented Investors and the Monetary Transmission Mechanism," Speech at the Banking, Liquidity and Monetary Policy Symposium, Center for Financial Studies, Frankfurt, Germany, Sept. 26, 2013.
- Stein, Jeremy C. 2014. "Incorporating Financial Stability Considerations into a Monetary Policy Framework," Speech at the International Research Forum on Monetary Policy, Washington, D.C., March 21, 2014.
- Swanson, Eric T., and John C. Williams. Forthcoming. "Measuring the Effect of the Zero Lower Bound on Yields and Exchange Rates," *American Economic Review*.
- Vayanos, Dimitri, and Jean-Luc Vila. 2009. "A Preferred-Habitat Model of the Term Structure of Interest Rates." Working Paper, National Bureau of Economic Research.
- Wheelock, David C., and Mark E. Wohar. 2009. "Can the Term Spread Predict Output Growth and Recessions? A Survey of the Literature," *Review*, (September), 419-440.
- Whited, Toni M., and Guojun Wu. 2006. "Financial Constraints Risk," *Review of Financial Studies*, 19(2), 531-559.
- Wright, Jonathan H. 2012. "What Does Monetary Policy Do to Long-Term Interest Rates at the Zero Lower Bound?" *Economic Journal*, 122(564), F447-F466.

Appendix: Data Description

The firm level data come from Compustat. Variables of firms' financial statement variables are downloaded for U.S. firms at an annual frequency for all years that are available. Financial firms with SIC code between 6000 and 6999 are dropped.

Long-Term Debt Dependence

We construct the baseline long-term debt dependence as follows: in financial statements, assets and liabilities of different maturities are distinguished at the one-year cutoff. Following Greenwood, Hanson, and Stein (2010), long-term liability is defined as all debts with a maturity of one year or longer. Since some of the short-term liabilities on the balance sheets are long-term debts with remaining maturing less than one year, the total amount of long-term debts is the sum of total long-term debt ($dltt$) and long-term debt due in one year (ddl). Similarly, short-term debt is calculated as Debt in Current Liabilities minus long-term debt due in one year (ddl). This ratio is then averaged over years to obtain the long-term debt dependence ratio. For the baseline case, the average is computed with observations before 2007.

We compute long-term debt dependence with maturity in excess of three years as follows. The variables $dd2$ and $dd3$ measure debt with **remaining** maturity between one and two years, and two and three years, respectively. Total long-term debt ($dltt$)- $dd2$ - $dd3$ gives the stock of debt with maturity in excess of three years. Unfortunately, because variables like $dd2$ and $dd3$ measure the remaining maturity of debt, rather than the maturity at issuance, a long-term loan (at issuance) can be misclassified as a short-term loan if the long-term loan is close to maturity.¹⁸ Consider a loan that was issued with maturity of 30 years and is now 28 years old. This loan will have a remaining maturity of two years ($dd2$), and be omitted in an imputation like $dltt$ - $dd2$ - $dd3$, potentially mismeasuring a firm's long-term debt dependence. This mismeasurement problem can become worse when the imputation is extended to longer maturities $dd4$ and $dd5$.

Also, the reporting in Compustat can make these imputations unreliable. In the case of $dltt$ - $dd2$ - $dd3$, some 3.5% of the observations are negative, and another 32% are missing, relative to the baseline one year cutoff definition for long-term debt. Extending the imputation to debt with remaining maturity beyond five years: $dltt$ - $dd2$ - $dd3$ - $dd4$ - $dd5$ gives negative values in 9.1% of the observations, and missing values in 37% of the cases relative to the one year cutoff baseline.

Other Controls

A couple of size variables are controlled for in the model. All variables are at an annual frequency. Total assets are obtained directly from Compustat (at). Market capitalization is the product of closing

¹⁸ The choice of remaining maturity and issuance maturity does not affect long-term debts measures with one-year cutoff. The two measures are identical for the one-year cutoff.

stock price on financial year end (*prcc_f*) and total amount of outstanding common shares of the firm (*csho*). Sizes of debts are controlled for by total long-term debts and total debts, both normalized by lagged total assets (*at*). Book-to-market ratio is the ratio of book equity (*ceq*) over market capitalization. We have a few measures of firms' profitability: (1) net income growth is the log growth rate of firms net income (*item ni*); (2) return on assets is net income divided by the sum of market capitalization and total liabilities (*item ni* divided by the sum of market capitalization and *lt*); (3) *i2a* is computed by dividing operating income before depreciation (*item oibdp*) normalized by lagged total assets.

Two measures are used to control for firms' investment opportunity: average Q and investment opportunity *i2s*. A firm's average Q is the sum of market capitalization and total assets minus book equity and all normalized by lagged total assets. Investment opportunity is defined to be capital expenditure (*item capx*) divided by net sales (*item sale*) of firms. This variable is similarly defined as in Gorodnichenko and Weber (2013). Capital intensity (*d2a*) is the ratio of depreciation (*dp*) over lagged total assets (*at*).

We have variables to measure a firm's dependence on short term financing and external financing and. Short-term financing need (*rp2s*) is calculated first by taking the difference between receivables (*rect*) and payables (*ap*), and then by the dividing this difference by total sales (*sale*).

And as before, to limit any spurious associations induced by the crisis, we take the historical average of all the control variables through 2007. For robustness, we also try taking the average of the control variables through to Sept. 21, 2011, or just use the last available observation before 2007. All variables are winsorized at the 1% level to reduce the impact of outliers.

In the sections of evaluating the effect of MEP on firm activities, we have other firm-level variables at an annual frequency. Growth in long-term debts and in short-term debts are log growth rates of long-term debts and short-term debts, respectively. Growth in properties, plants, and equipment, a measure of net investment, is computed as the log growth rate of the item *ppent* in Compustat. Growth in employment is computed as the log growth rate of the item *emp* in Compustat. Similarly, growth in cash holdings is the log growth rate of cash and short-term investments (*item che*) in Compustat. Dividend and shares repurchase is equal to total dividend (*item dvt*) plus purchase of preferred and common stocks (*item prstk*) minus redemption of preferred stocks (*item pstkrv*). Then we compute the log growth rate for this variable. All of these four variables are winsorized at the 1% level.

Abnormal Returns

We obtained daily returns of stocks of public firms from CRSP to compute abnormal returns. The abnormal returns used on the left hand side of the regressions are predicted residuals from a one-factor model controlling for market returns (MacKinlay (1997)). To be more specific, suppose the event date is denoted as *T*, we first run a one-factor regression using data range from one year and one month before the event date to one month before the event date. The one-factor regression for firm *i* is given as

$$r_{it} = \alpha_{iT} + \beta_{iT}r_{mt} + \varepsilon_{it}$$

where $t=T-395, \dots, T-30$, and r_{mt} the returns of the S&P 500 portfolio. After obtaining the coefficient estimates α_{iT} and β_{iT} , the abnormal returns are computed as the predicted residuals $\hat{\epsilon}_{iT} = r_{iT} - \hat{\alpha}_{iT} - \hat{\beta}_{iT}r_{mT}$ for firm i at event date T .

Bond Data

We obtain bond issuance data from the Mergent FISD database, which contains comprehensive bond issuance data since the 1980s. The database provides a lot of information about a particular issuance, including date of issuance, maturity, amount issued, coupon, and credit rating. We first collected all bond issuances for nonfinancial firms from FISD. From the data, we see that a firm typically issues very few bonds per year. For example, among firms that have ever issued a corporate bond in a given year, over 50% of those firm issued only one corporate bond in that year. Given this sparse nature of bond issuance, we aggregate the issuance to firm-calendar year and merge the data set from FISD to the Compustat file by CUSIP and company names. This merge results in a match of 2,517 firm year, and it allows us to test whether the MEP affected the probability of a firm issuing a corporate bond.

NAIC bond credit ratings are constructed from the credit ratings assigned by the three major credit rating agencies and provided by FISD. Following the NAIC procedure similarly applied by Becker and Ivashina (forthcoming), we compute the median credit rating when all three ratings are available, and the minimum credit rating when only two ratings are available.