



Accessing Economic Opportunity: **Northeastern Pennsylvania**

Opportunity Employment

Jobs that do **not require a four-year college degree** and pay above the national annual median wage, once adjusted for local differences in price levels. In 2015, these were jobs that **paid above \$33,304**.

Access to Opportunity Employment


Neighborhoods were classified according to the percent of regional opportunity employment accessible by transit in 60 minutes.*

low access
($<8\%$)


middle access
($8.0-27.5\%$)

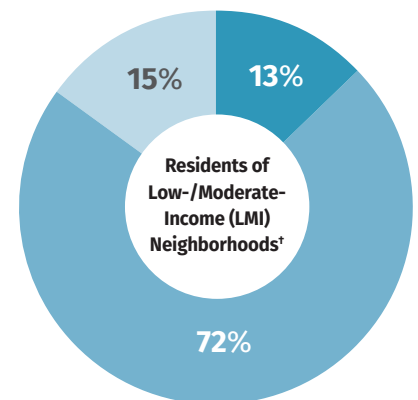
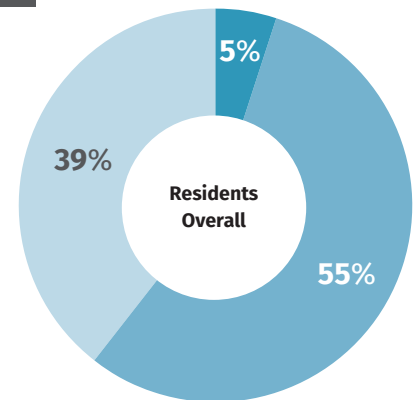
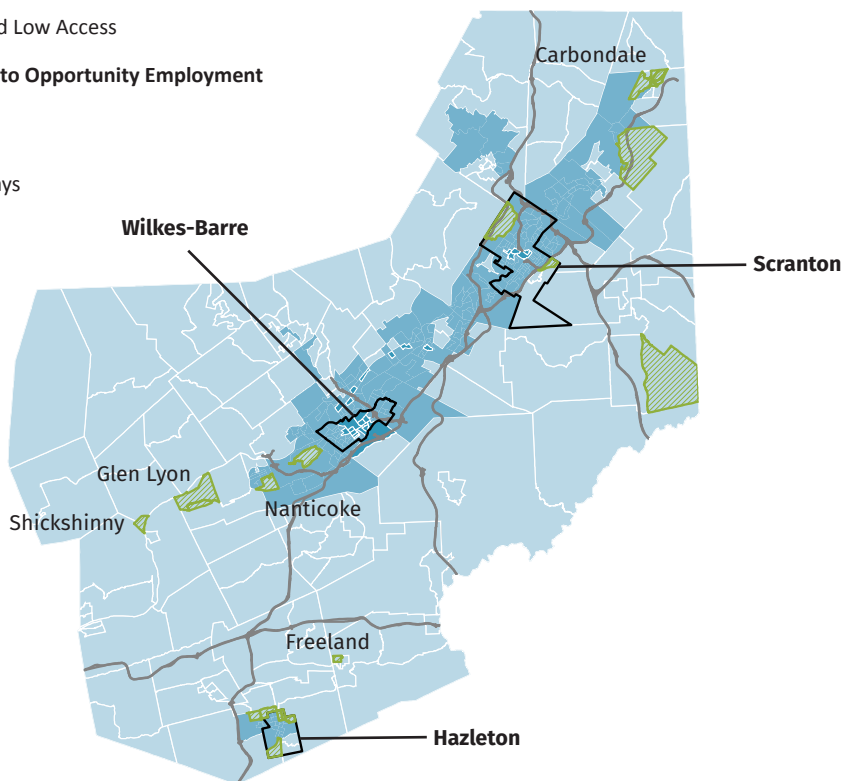
high access
($>27.5\%$)

ACCESS TO JOBS IN NORTHEASTERN PA

 LMI and Low Access

Access to Opportunity Employment

 High
 Middle
 Low
 Highways



The average resident can access **12 percent** of opportunity employment within a 60-minute weekday morning commute.*



39 percent of residents overall have **low access to opportunity employment**, 55 percent have middle access, and 5 percent have high access.



10 percent of residents with low access **live in LMI neighborhoods**.

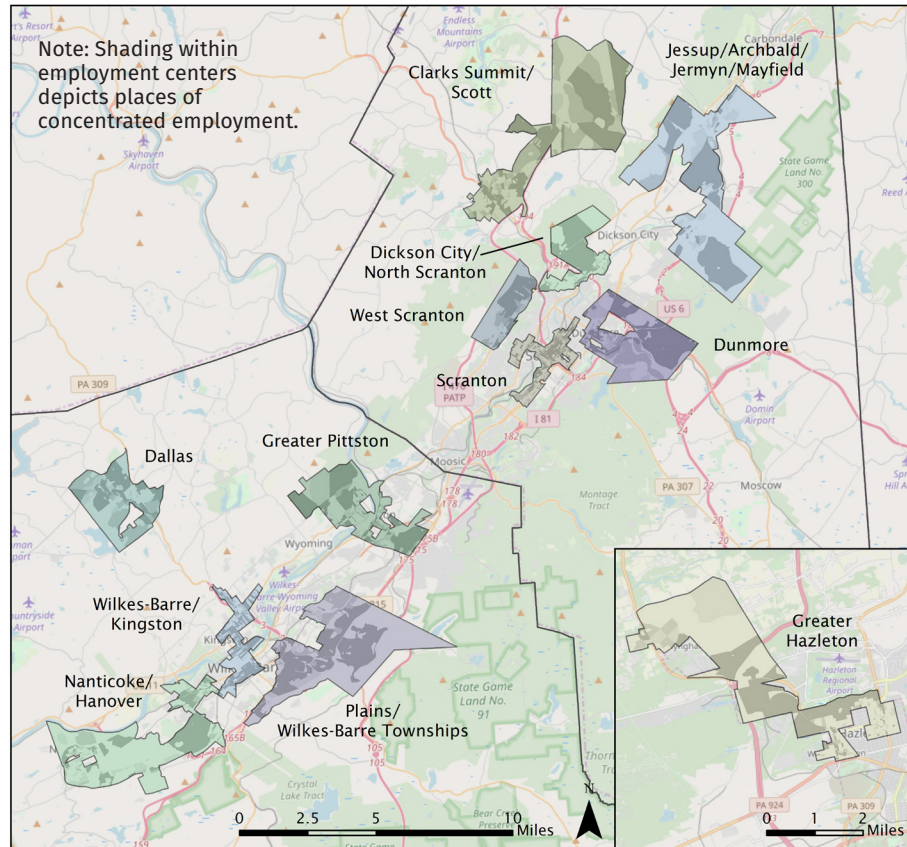
* The 60-minute commute time includes no more than a total of 20 minutes of walking. † LMI neighborhoods had a 2015 median household income less than \$37,038.

ACCESS TO TALENT IN NORTHEASTERN PA

Employment centers have greater than expected job density and **at least 3,000 jobs**.

53% of employment is located in **12 employment centers**.

The **5 largest employment centers** are accessible by **less than 30 percent of prime-age residents** (25–54 years old).



Employment Center	Employment	Percent of County Employment	Average Share of Prime-Age Residents with Access	Average Share of Residents of Low- and Moderate-Income Neighborhoods with Access
Plains/Wilkes-Barre Townships	20,754	9%	6%	11%
Scranton	18,666	8%	29%	39%
Wilkes-Barre/Kingston	18,643	8%	28%	40%
Nanticoke/Hanover	11,167	5%	13%	25%
Dunmore	7,872	4%	7%	13%
Greater Hazleton	7,591	3%	4%	9%
Dickson City/North Scranton	7,433	3%	6%	11%
Greater Pittston	6,012	3%	17%	27%
Dallas	5,203	2%	5%	6%
Clarks Summit/Scott	5,105	2%	8%	13%
Jessup/Archbald/Jermyn/Mayfield	4,380	2%	2%	3%
West Scranton	4,097	2%	15%	23%
Total Center Employment	116,923	53%		

For more information and to view the complete report, please visit www.PhiladelphiaFed.org

Sources: Authors' calculations using data obtained from County of Lackawanna Transit System (COLTS), Hazleton Public Transit (HPT), Center for Neighborhood Technology (CNT), Open Street Map (OSM), 2011–2015 American Community Survey (ACS) Public Use Microdata Sample (PUMS), Bureau of Economic Analysis (BEA) Regional Price Parities (RPPs) (2011–2015), Longitudinal Employer-Household Dynamics Origin-Destination Employment Statistics (LEHD LODES) (2015), U.S. Census TIGER/Line Shapefiles, and Pennsylvania Department of Transportation (PennDOT)