



Rural Community Action Assembly: Rural Health Funding and Community Readiness

The views expressed today are our own and not necessarily those of the Federal Reserve Bank of Philadelphia or the Federal Reserve System.



Guidelines

Disclaimer: The information, analyses, and conclusions set forth are those of the presenters and do not necessarily reflect the views of the Federal Reserve Bank of Philadelphia or the Federal Reserve System.

- **Please share your name and organization** so that speakers and audience members can see who is participating.
- Use the **Q&A** box to ask questions and offer comments. You have the option to submit your questions or comments anonymously.
- Be sure to **mute yourself when you are not speaking**. If there is background noise while your microphone is active, the host may mute you.
- **Today's assembly will be recorded**. The recording of today's presentations will be shared with slides after the assembly.
- A **survey evaluation** will be available after the assembly. Your input and feedback are important for informing future programming.

The Federal Reserve Bank of Philadelphia (the Bank) may create video recordings, audio recordings, photographs and/or digital images of all or selected portions of this event. By attending, you irrevocably grant the Bank the right and your consent to create such media containing your name, voice and/or likeness. You also irrevocably agree that the Bank will have exclusive ownership of, and the right and your consent to edit and/or copyright such media, and to publish, distribute and/or otherwise use the same in any medium for any lawful purpose, without compensation to you.

Agenda

2:00 p.m.

Rural Health Funding and Community Readiness

- Carrie Cochran-McClain, Chief Policy Officer, National Rural Health Association
- Janice Walters, CEO, Rural Health Redesign Center
- Karin Rhodes, Special Advisor to the Secretary for Rural Health, Pennsylvania Department of Human Services
- Jesse Ergott, Chief Advancement Officer, AllOne Foundation
- **Moderator:** Lisa Davis, Director, Pennsylvania Office of Rural Health

3:00 p.m.

Panel Q&A

3:30 p.m.

Closing Remarks



From the Front Lines of Rural Health Transformation

Janice Walters, Chief Executive Officer, RHRC

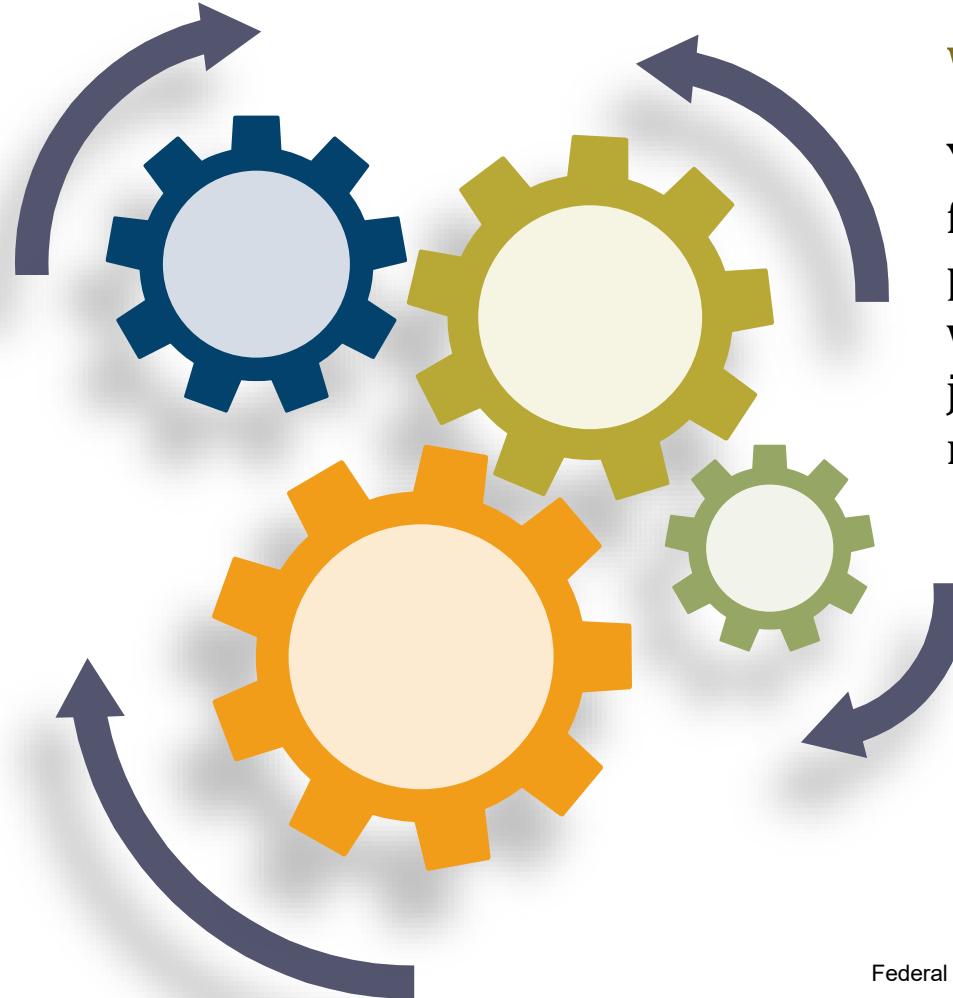
Rural Health is an Economic Development Issue

Healthcare + Business

Businesses and entrepreneurs are attracted to communities with strong healthcare.

Thriving Rural Communities

Strong economies generate improved health outcomes and reduce gaps in social needs, leading to a happier, healthier community.



Workforce

Young individuals and families, including medical providers, want to live in places with good schools, healthcare, job opportunities, and resources.

Economic Impact

Healthcare and businesses produce economic contributions, stable jobs, and health benefits.

Economic Development & Healthcare Are Interdependent

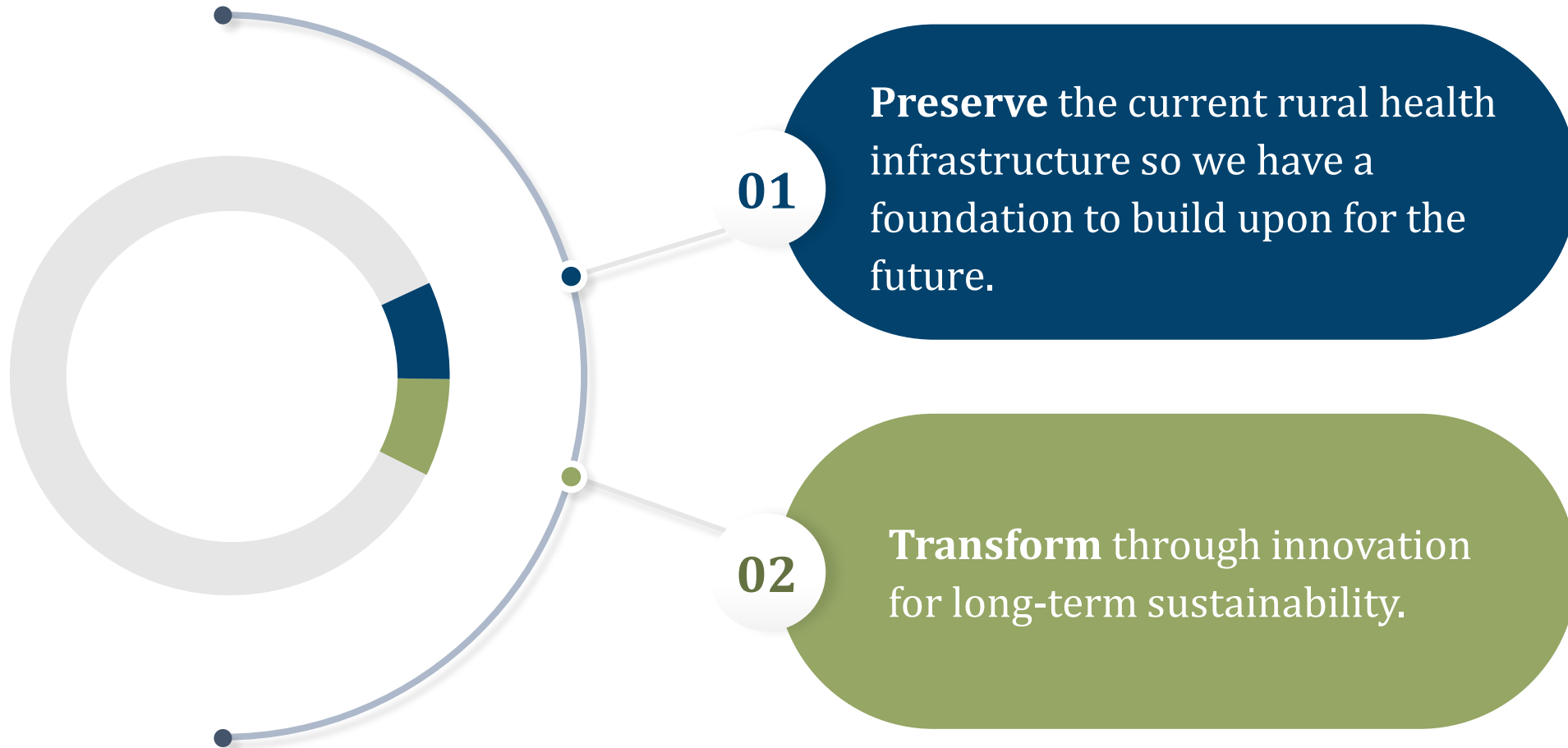


Adelpia Communications, Coudersport, PA

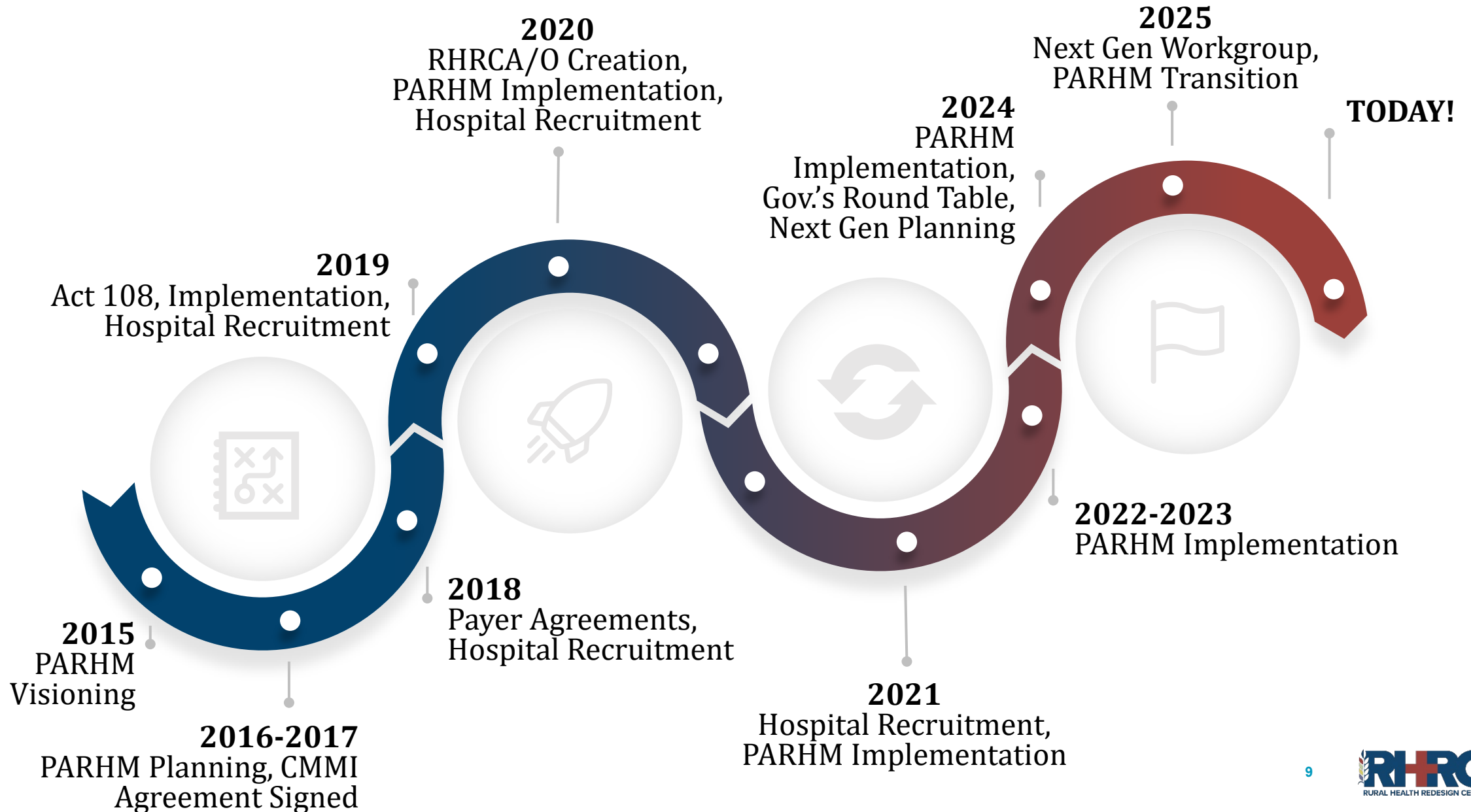


Charles Cole Memorial Hospital, Coudersport, PA

Must-Haves for Rural Economic Development



Background of PA's 10-Year Journey Together



Foundation and Goals of Pennsylvania Rural Health Model (PARHM)

Global Budget

The Model stabilizes cashflow from all participant payers.

Transformation Plan

The hospital is incentivized to invest in community health to retain revenue.



Improve rural hospital financial stability



Improve population health outcomes



Reduce total cost of care over time

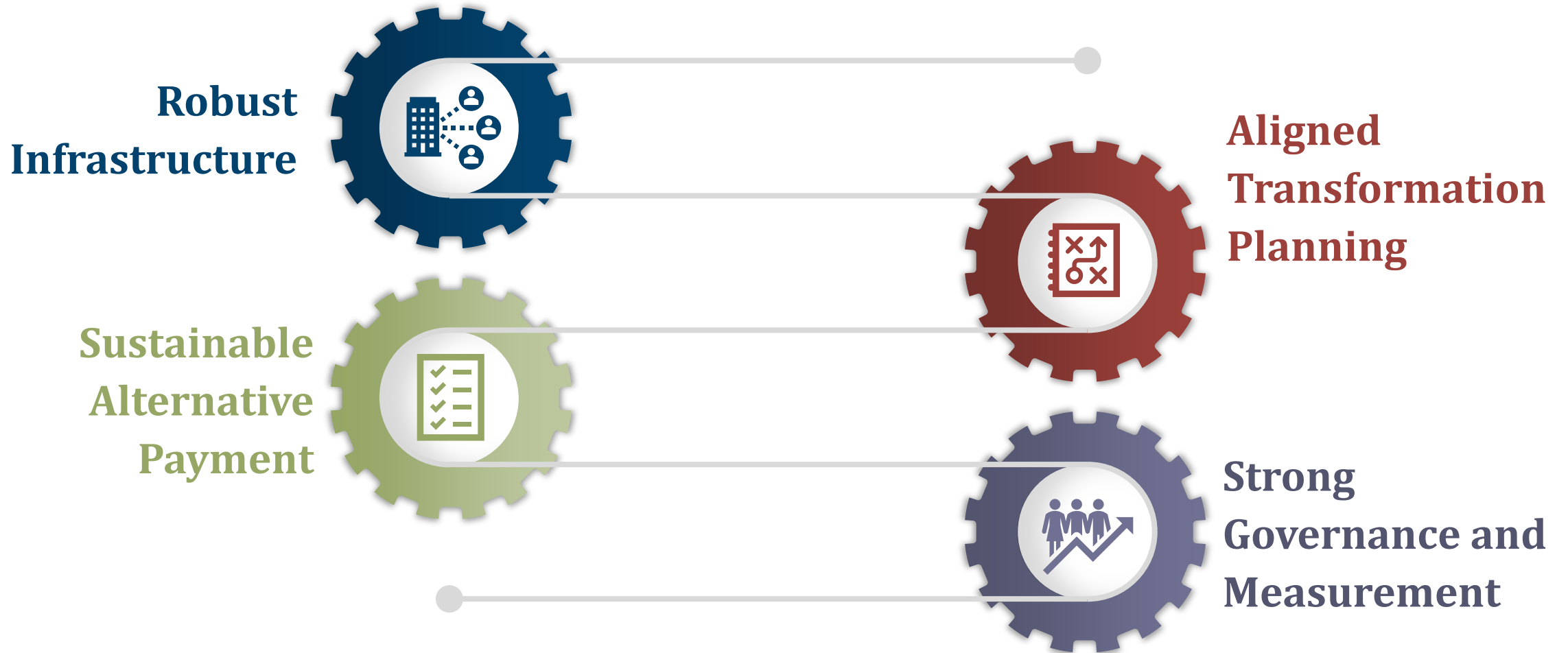
Moving away from FFS to population health-based payments.



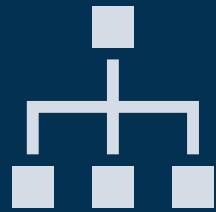
While the program provided benefits, payers began asking,
and hospitals agreed with the question,

*“How do we know we are preserving the right
care in our rural communities through the
global budget program?”*

Core Pillars of the Next Generation Program



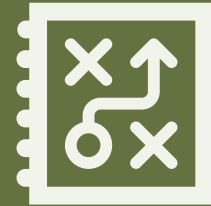
This Work Laid the Foundation for PA's RHTP, Identifying the Need For:



Community
and regional
approaches to
planning.



Strong
public-private
partnerships to
braid long-term
funding.



Good planning
in RHTP's early
years to ensure
sustainability
beyond the 5-
year period.

Most Importantly, We Identified:

Will be paying for the transformed rural healthcare continuum post-RHTP dollars; therefore, alternative payment must be part of the solution.



Contact Information



Reach out to RHRC if you have questions or would like to learn more.

Support@rhrco.org



Visit our website directly to learn more and subscribe to our newsletter.

RHRCO.org

Follow us:





Pennsylvania
Department of Human Services



Pennsylvania
Department of Health



PENNSYLVANIA
RURAL HEALTH TRANSFORMATION



Pennsylvania
Department of Aging



Pennsylvania
Insurance Department



Pennsylvania
Department of Drug and
Alcohol Programs

Pennsylvania's Rural Health Transformation Plan

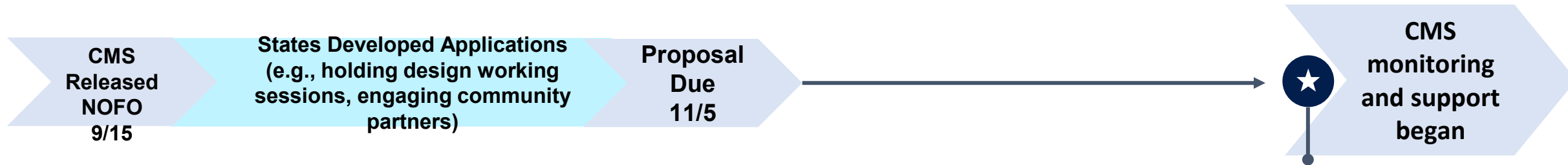
Content of presentation was reviewed and approved and branding is used as required by the U.S. Department of Health and Human Services and Centers for Medicare & Medicaid Services as required in terms outlined in the Rural Health Transformation Program Notice of Award.

*This project is supported by the Centers for Medicare & Medicaid Services (CMS) of the U.S. Department of Health and Human Services (HHS) as part of a financial assistance award totaling **\$193 million**, pending final budget approval, with 100 percent funded by CMS/HHS. The contents are those of the author(s) and do not necessarily represent the official views of, nor an endorsement, by CMS/HHS, or the U.S. Government.*

RHTP Application Process

States may apply for \$200M/year for 5 years – Single application

September 2025					October 2025				November 2025				December 2025				Q1 2026 and Beyond	
9/1	9/8	9/15	9/22	9/29	10/6	10/13	10/20	10/27	11/3	11/10	11/17	11/24	12/1	12/8	12/15	12/22	12/29	1/1



December 29, 2025:

CMS announced RHTP awards; Pennsylvania awarded **\$193 million** for year one, pending final budget approval, renewable for years 2-5



Pennsylvania's RHTP: Supporting Strong, Resilient Rural Communities



Pennsylvania Rural Health Transformation Plan
Vision

Pennsylvania's RHTP envisions strong, resilient rural communities where people of all ages can access timely, high-quality care close to home, accomplished by leveraging and strengthening local infrastructure through technology, innovation, and collaboration.



RHTP Goals

- Improve Access to Care and Outcomes
- Use Technology to Drive Innovation
- Expand Partnerships for Change
- Create a Robust Workforce to Address Regional Need
- Use Data-Driven Solutions
- Implement Financial Sustainability Strategies



RHTP Initiatives

- Technology & Infrastructure
- Workforce
- Maternal Health
- Behavioral Health
- Aging and Access
- EMS and Transportation

Pennsylvania's RHTP: Supporting Strong, Resilient Rural Communities

Aging and Access

- Hospital-to-Home Community Paramedicine
- Nurse Aide Training Hub Expansion

Behavioral Health

- Remote Behavioral Health Consultation
- Peer Recovery Specialists Training Programs

EMS and Transportation

- Modernize EMS Infrastructure
- Rural Paramedicine and Mobile Health Programs
- Increase Reliable Nonemergency Transportation

Maternal Health

- Comprehensive Maternal Health Hubs
- Remote Monitoring
- Consumer-Facing New Mom App

Technology and Infrastructure

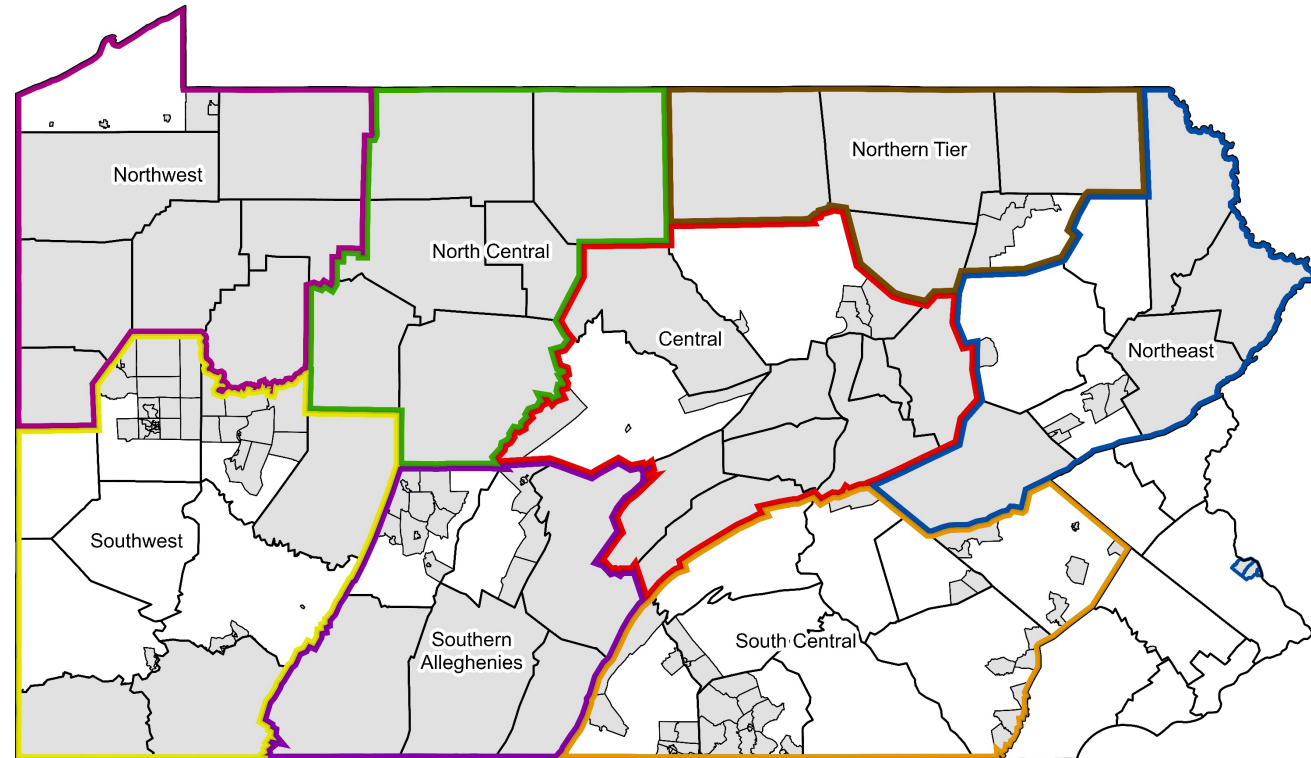
- Data Innovation and Information Exchange to Strengthen Pennsylvania's Care Network
- Digital Infrastructure and Next-Generation AI
- Mobile and Digital Health That Reaches Every Community

Workforce

- Recruiting Rural Students into Health Care
- Supporting Rural Clinic Training
- New and Expanded Workforce Models for Rural Pennsylvania

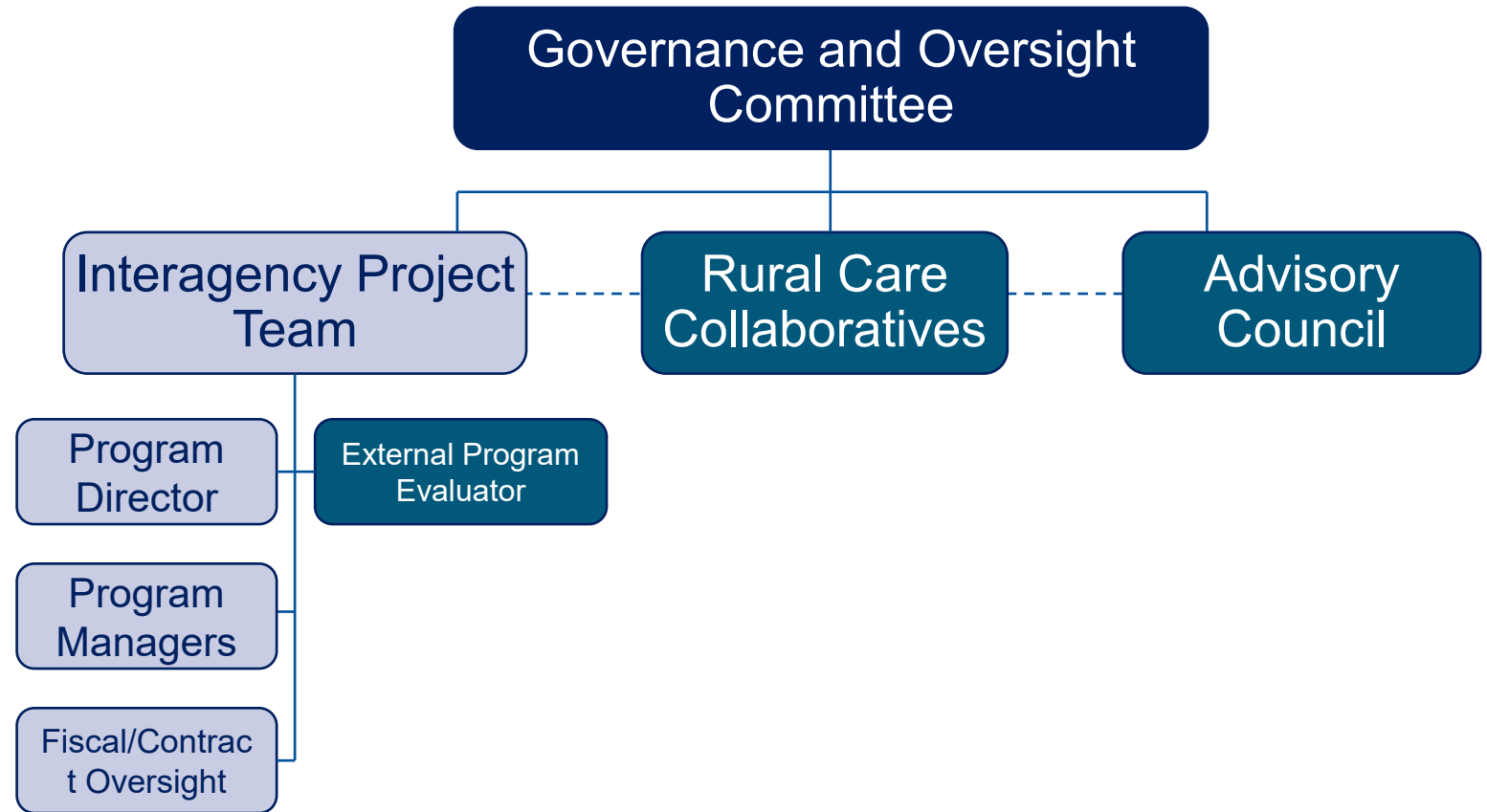
Rural Care Collaboratives (RCCs)

- Convene regionally
- Prioritize initiatives to meet regional needs
- Establish and strengthen shared services
- Support regional technology solutions and clinical integration
- Focus on consistent access to high-quality and specialty care
- Looking to be staffed and meeting by end of 2026



Statewide Leadership Supporting Regional Solutions

- State will support RCCs and RHTP by:
 - Establishing clear **RHTP goals and accountability**
 - Establish statewide governance and an Advisory Council
 - Ensure technical assistance and fiscal oversight
 - Engage with independent evaluation partner – ensure consistent metrics and evaluation



Years 1 and 2: Rapid Response Program

Recognizing the urgency of challenges rural communities face today, Pennsylvania plans to launch a short-term Rapid Response Access Stabilization Program in Years 1 and 2

Targets key near-term investments, including:

- Preserving essential hospital and EMS capacity;
- Investing in technology and workforce; and,
- Supporting projects that align with RHTP.

Rapid Response will allow for near-term support as regional implementation and oversight is established.



Next Steps

- Meeting regularly with the Centers for Medicare and Medicaid Services (CMS)
 - Attended a 3/18 in-person CMS RHTP summit with all 50 states represented
- Updates are available dhs.pa.gov/ruralhealth
 - Sign up for email updates and submit inquiries
- Stay tuned for public webinar with information on the first year of the program



Thank you!



We will continue to share updates:
www.dhs.pa.gov/ruralhealth

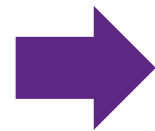


ALLO[®]NE
FOUNDATION & CHARITIES

Our History: Healthcare Conversion



is now



Mission Statement



To measurably improve the health and wellness of the people of Northeastern and North Central Pennsylvania.

Our Unique Model:



AllOne Foundation

Private foundation; principal grantmaker investing in high-impact initiatives addressing key regional healthcare challenges.



AllOne Charities

Public nonprofit enabling fundraising and community engagement; awards grants to grassroots health and human service programs.



AllOne Health

For-profit EAP offering nationwide behavioral health services; profits support AllOne Charities' ongoing philanthropic work.



Northeastern and North Central Pennsylvania

IMPACT

\$7,376,090
TOTAL RAISED BY ALLONE CHARITIES

1,256
TOTAL GRANTS

498
TOTAL ORGANIZATIONS

\$59,985,072

TOTAL COMMITTED BY ALLONE FOUNDATION AND CHARITIES

\$39,768,942
COMMITTED BY ALLONE FOUNDATION

\$20,216,130
COMMITTED BY ALLONE CHARITIES



Philanthropy & The RHTP: Meeting the Moment

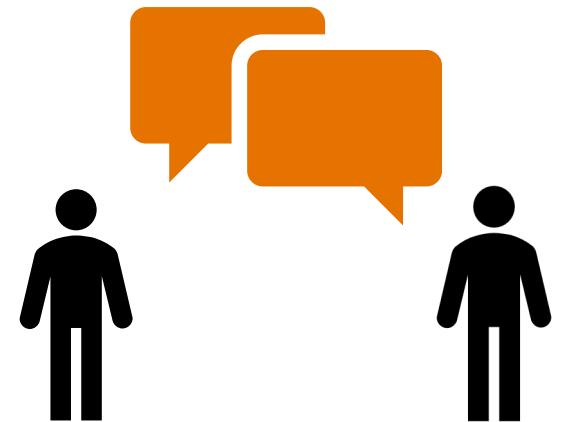
Be
Proactive



Look to the
Future



Ask: “How Can
We Help?”



THE WRIGHT CENTER
for
COMMUNITY HEALTH

THE WRIGHT CENTER
for
GRADUATE MEDICAL
EDUCATION

 GUT
Tunkhannock

Investing in Collaborative Models



Examples from Wyoming County

RHTP Regional Roadmap: A CALL TO ACTION

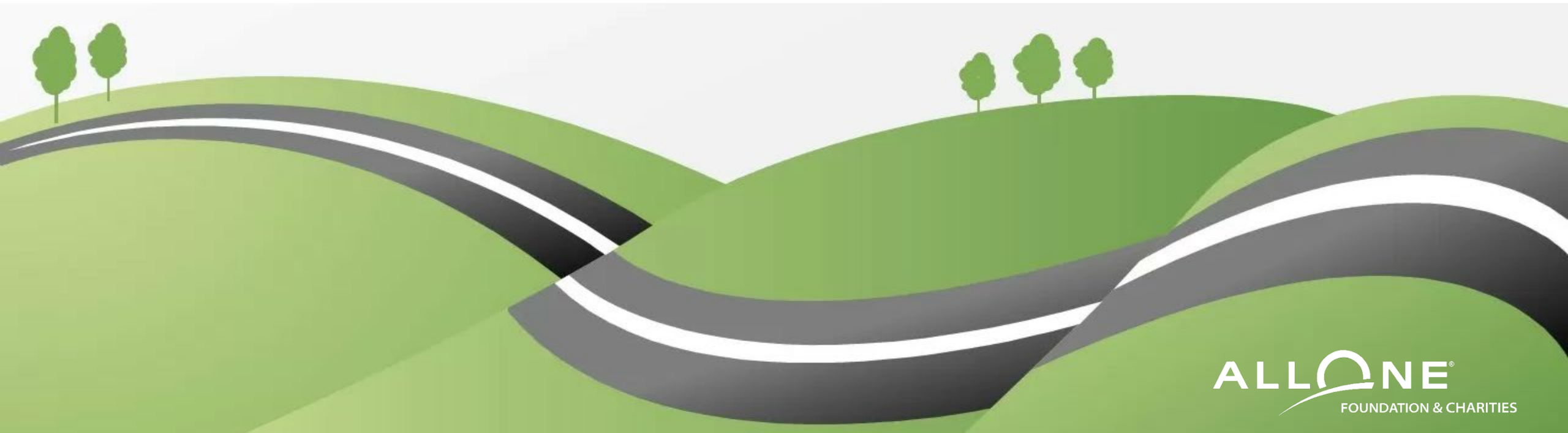


Learn

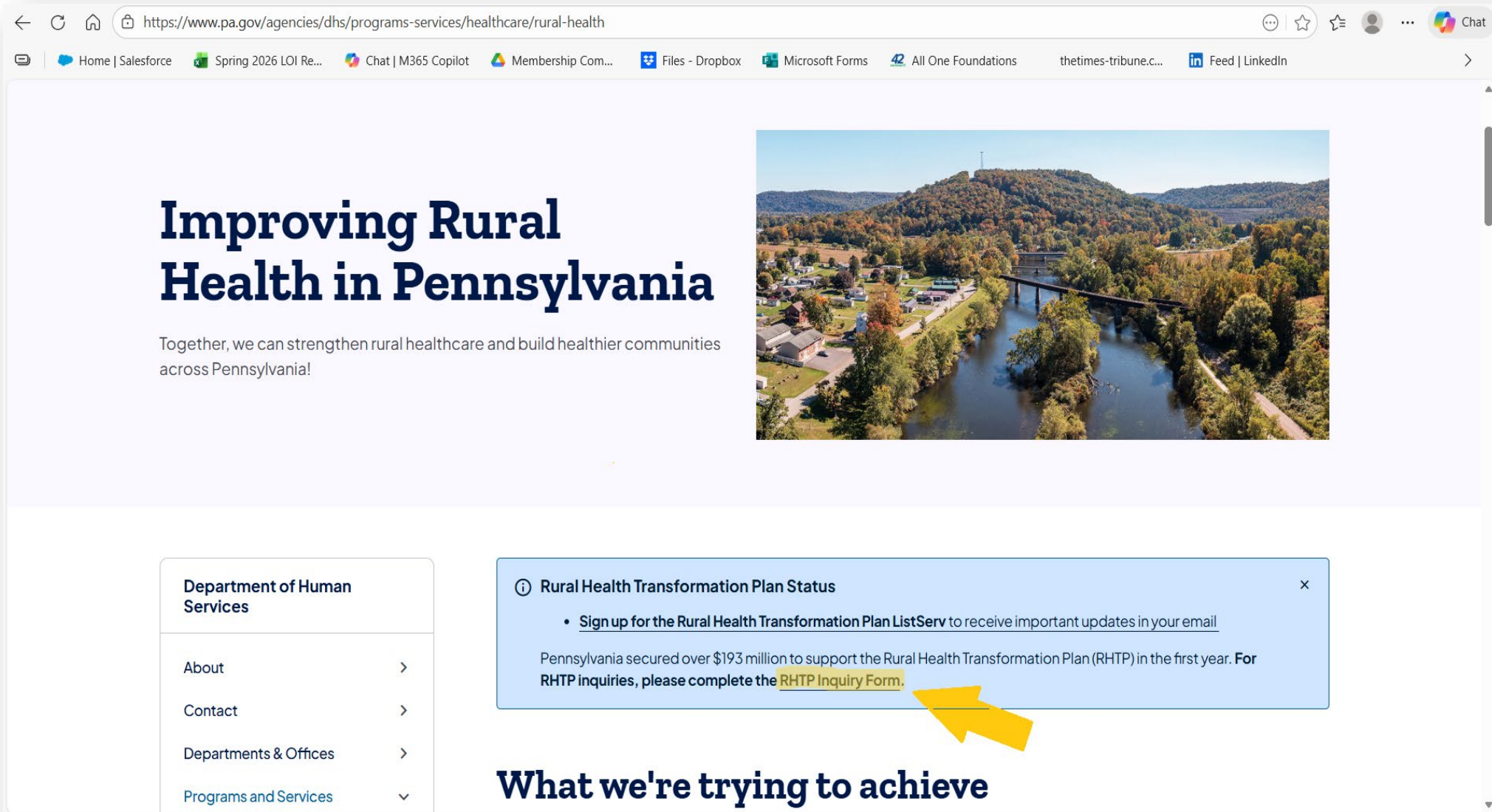
Participate

Convene

Invest



Rural Care Collaboratives...




← ↻ 🏠 <https://www.pa.gov/agencies/dhs/programs-services/healthcare/rural-health> ⋮ ⭐ ⚙️ 👤 ⋮ 🗨️ Chat

📧 Home | Salesforce 🟢 Spring 2026 LOI Re... 🗨️ Chat | M365 Copilot 🟢 Membership Com... 📁 Files - Dropbox 📄 Microsoft Forms 42 All One Foundations thetimes-tribune.c... 🌐 Feed | LinkedIn >

Improving Rural Health in Pennsylvania

Together, we can strengthen rural healthcare and build healthier communities across Pennsylvania!



Department of Human Services

- About >
- Contact >
- Departments & Offices >
- Programs and Services ▾

📘 Rural Health Transformation Plan Status ×

- [Sign up for the Rural Health Transformation Plan ListServ](#) to receive important updates in your email

Pennsylvania secured over \$193 million to support the Rural Health Transformation Plan (RHTP) in the first year. For RHTP inquiries, please complete the [RHTP Inquiry Form](#).

What we're trying to achieve

Rural Care Collaboratives...

https://forms.office.com/pages/responsepage.aspx?id=QSiOQSgB1U2bbEf8Wpob3qZoZng4ExpNhFzqefrHHFUN0RFNEk1NkNLWVlaVkszWFITRU84Ulo5TiQIQCN0PWcu&r... Update ... Chat

Home | Salesforce Spring 2026 LOI Re... Chat | M365 Copilot Membership Com... Files - Dropbox Microsoft Forms All One Foundations thetimes-tribune.c... Feed | LinkedIn

Rural Health Transformation Plan - Inquiry Form

* Required

Reason for Outreach

8

Choose the nature of your inquiry. *

Please use the above referenced link enroll in the RHTP ListServ. You will not be manually enrolled through this form.

- Question or clarification
- Suggestion
- Issue or barrier in your community
- Interest in joining a Rural Care Collaborative or the Advisory Council

9

Federal Reserve Bank of Philadelphia 34



**KING'S
COLLEGE**
TRANSFORMATION. COMMUNITY. HOLY CROSS.

Northeastern Pennsylvania Rural Healthcare Summit

May 29, 2026

8:00 a.m. to 4:00 p.m.

King's College in Wilkes-Barre

Submit Questions Using the Q&A Box

Rural Health Funding and Community Readiness

- Carrie Cochran-McClain, Chief Policy Officer, National Rural Health Association
- Janice Walters, CEO, Rural Health Redesign Center
- Karin Rhodes, Special Advisor to the Secretary for Rural Health, Pennsylvania Department of Human Services
- Jesse Ergott, Chief Advancement Officer, AllOne Foundation
- **Moderator:** Lisa Davis, Director, Pennsylvania Office of Rural Health



Thank You!

- Please complete the survey
- Suggestions or questions about the series?
 - Contact Philip Jones at Philip.Jones@phil.frb.org



PennState
College of Agricultural Sciences